

STREET IMPROVEMENT PLAN

STOCKTON AVENUE AND ESPLANADE INTERSECTION

CITY OF CAPITOLA, CALIFORNIA

BASIS OF BEARINGS

THE BASIS OF BEARINGS FOR THIS SURVEY IS THE CENTERLINE OF SAN JOSE AVENUE AS SHOWN ON THE RECORD OF SURVEY 88-M-44 = N 142° E

TEMPORARY BENCHMARK

BENCHMARK IS CUT + IN CONCRETE SIDEWALK LOCATED APPROXIMATELY 59.42' NORTHEAST OF THE FOUND LEAD TAG AND PLUG, RE 6270, IN SIDEWALK AT SOUTHEAST CORNER OF STOCKTON AVENUE AND ESPLANADE
ELEVATION = 10.23

BENCHMARK

BENCHMARK IS SANTA CRUZ COUNTY BENCHMARK 909, USGS BM "Z 212 1935" CAPITOLA RR STATION, NWLY OF MONTEREY & PARK AVES. INTERSECTION 3' S OF T.P.#13 LOCATED BY 4" X 4" WITNESS POST, STD DISK, SET IN CONC. FOUNDATION
ELEVATION = 63.922 NGVD 29 (ADJUSTED)

CONTOUR INTERVAL = 1 FOOT

DIMENSIONS ARE SHOWN IN FEET AND DECIMALS THEREOF

AERIAL TOPOGRAPHIC MAPPING BY AERO-GEODETTIC CORPORATION, APRIL 2000.

NOTICE TO CONTRACTOR

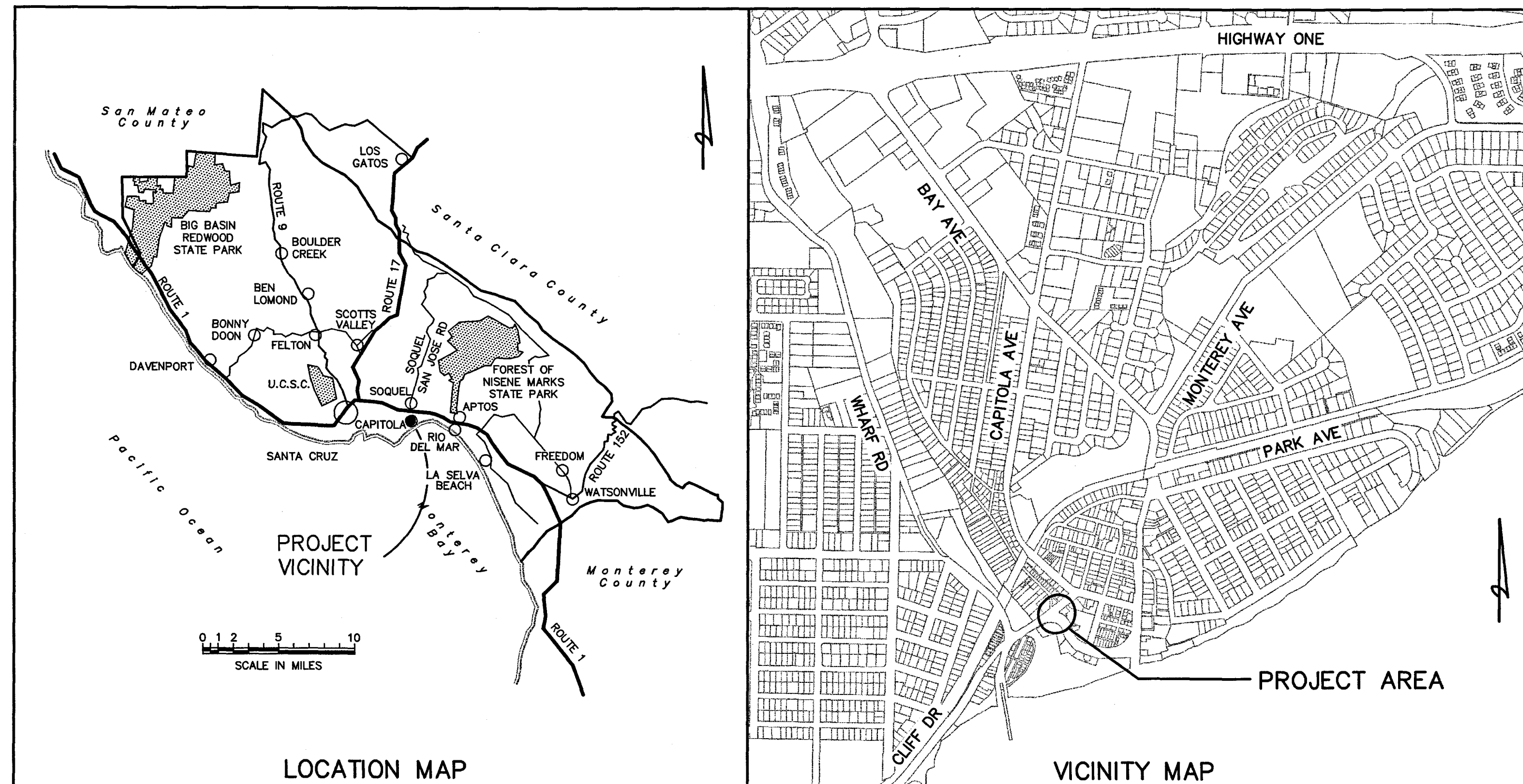
CONSTRUCTION CONTRACTOR AGREES THAT IN ACCORDANCE WITH GENERALLY ACCEPTED CONSTRUCTION PRACTICES, CONSTRUCTION CONTRACTOR WILL BE REQUIRED TO ASSUME SOLE AND COMPLETE RESPONSIBILITY FOR JOB SITE CONDITIONS DURING THE COURSE OF CONSTRUCTION OF THE PROJECT, INCLUDING SAFETY OF ALL PERSONS AND PROPERTY; THAT THIS REQUIREMENT SHALL BE MADE TO APPLY CONTINUOUSLY AND NOT BE LIMITED TO NORMAL WORKING HOURS, AND CONSTRUCTION CONTRACTOR FURTHER AGREES TO DEFEND, INDEMNIFY AND HOLD DESIGN PROFESSIONAL HARMLESS FROM ANY AND ALL LIABILITY, REAL OR ALLEGED, IN CONNECTION WITH THE PERFORMANCE OF WORK ON THIS PROJECT, EXCEPTING LIABILITY ARISING FROM THE SOLE NEGLIGENCE OF DESIGN PROFESSIONAL.

UNAUTHORIZED CHANGES AND USES:

THE ENGINEER PREPARING THESE PLANS WILL NOT BE RESPONSIBLE FOR, OR LIABLE FOR, UNAUTHORIZED CHANGES TO OR USES OF THESE PLANS. ALL CHANGES TO THE PLANS MUST BE IN WRITING AND MUST BE APPROVED BY THE PREPARER OF THESE PLANS.

UNDERGROUND UTILITIES

IT SHALL BE THE CONTRACTOR'S RESPONSIBILITY TO VERIFY THE LOCATION AND DEPTH OF ALL UTILITIES PRIOR TO STARTING ANY WORK. CALL UNDERGROUND SERVICE ALERT (USA) AT (800)642-2444 AT LEAST 48 HOURS IN ADVANCE OF EXCAVATION TO MARK THE LOCATION OF UTILITIES ON THE SITE. VERIFY DEPTH BY APPROVED "POT HOLING" METHODS PRIOR TO EXCAVATION.



PROJECT DESCRIPTION

1. WIDEN THE SIDEWALK ALONG THE AREA SHOWN.
2. REPLACE THE CONCRETE CURB, GUTTER & SIDEWALK AS SHOWN TO MATCH THAT ON CAPITOLA AVE. AND ALONG THE SOUTH SIDE OF THE ESPLANADE.
3. PLACE TWO NEW TREES AND ONE NEW STREET LIGHT.
4. RE-STRIPE ROADWAY AND CROSSWALKS.

SHEET INDEX

- C1.0 COVER SHEET
- C2.0 PROJECT PLAN & GENERAL NOTES
- C3.0 STREET IMPROVEMENT PLAN - DEMOLITION
- C3.1 STREET IMPROVEMENT PLAN - LAYOUT
- C3.2 STREET IMPROVEMENT PLAN - GRADING
- C3.3 CURB AND GUTTER PROFILES
- C4.0 STANDARD DETAILS
- C4.1 DETAILS & SPECIFICATIONS
- TP-1 TOPOGRAPHIC MAP

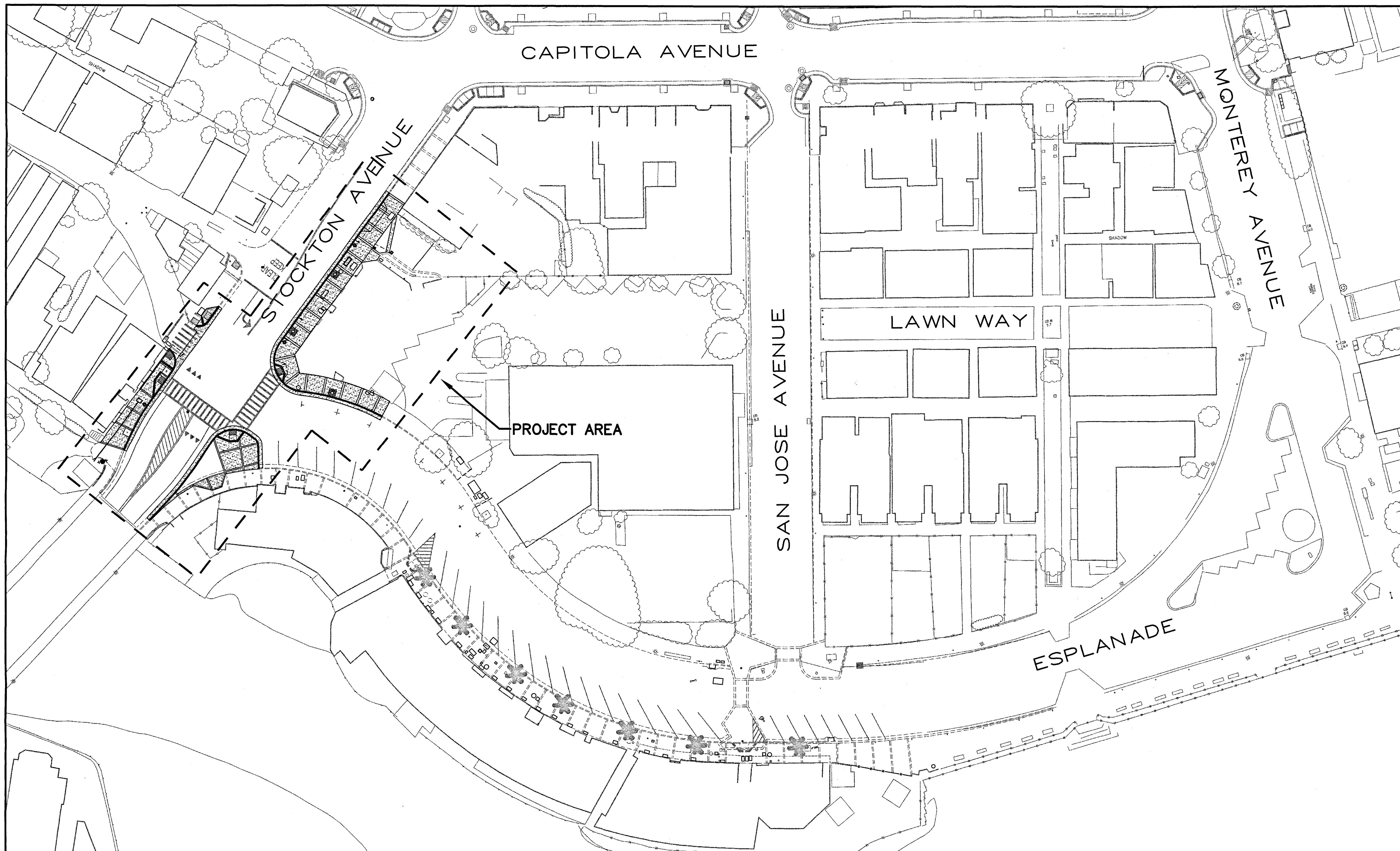
DISCLAIMER

THE DATA SET FORTH ON THIS SHEET IS THE PROPERTY OF BOWMAN & WILLIAMS CONSULTING CIVIL ENGINEERS. IT IS AN INSTRUMENT OF SERVICE AND MAY NOT BE REPRODUCED, ALTERED, OR USED WITHOUT THE CONSENT OF THE ENGINEER. THE PROPER ELECTRONIC TRANSFER OF DATA SHALL BE THE USER'S RESPONSIBILITY WITHOUT LIABILITY TO THE ENGINEER. UNAUTHORIZED USE IS PROHIBITED.

APN 035-211-01, 02, 03 & 04



REVISIONS		COVER SHEET
BOWMAN & WILLIAMS CONSULTING CIVIL ENGINEERS 1011 CEDAR STREET SANTA CRUZ, CA 95060 (831) 426-3560		IMPROVEMENT PLANS STOCKTON AVENUE & ESPLANADE INTERSECTION THE CITY OF CAPITOLA, CALIFORNIA
SCALE AS SHOWN	DRAWN TPC/JFR	JOB NO. 23741
DATE JANUARY 14, 2015	CHECKED JFR	INDEX RODEO 3A
DESIGN JFR	DWG NAME 25422-2_C1	FILE NO. 25422
		SHEET C1.0 OF 9



GENERAL NOTES

1. THE CONTRACTOR SHALL MAKE A DETAILED AND THOROUGH STUDY OF THESE PLANS IN THEIR ENTIRETY PRIOR TO ANY WORK ON THE JOBSITE. HE IS TO VERIFY ALL EXISTING CONSTRUCTION CONDITIONS AND IS TO COORDINATE THESE DRAWINGS WITH ALL OTHER TRADE DISCIPLINES FOR THE COMPLETED WORK. HE IS ALSO TO UNDERSTAND THAT ANY FEATURE OF CONSTRUCTION NOT FULLY SHOWN OR DETAILED SHALL BE OF THE SAME TYPE AS SHOWN FOR SIMILAR CONDITIONS.
2. THE CONTRACTOR SHALL IMMEDIATELY REPORT TO THE ENGINEER ANY DISCREPANCY OCCURRING ON THE DRAWINGS OR FOUND IN HIS COORDINATION WORK. NO CHANGES IN APPROVED PLANS SHALL BE MADE WITHOUT PRIOR WRITTEN APPROVAL OF THE ENGINEER.
3. ANY REQUEST FOR ALTERATIONS OR SUBSTITUTIONS MUST BE PRESENTED DIRECTLY TO THE ENGINEER, ACCOMPANIED BY A DETAILED SKETCH, FOR REVIEW, BEFORE ANY APPROVAL WILL BE GIVEN AND BEFORE PROCEEDING WITH THE WORK. ABSOLUTELY NO ALTERATIONS OF THESE DOCUMENTS OF ANY KIND WILL BE APPROVED ON ANY SHOP DRAWINGS.
4. ALL CONSTRUCTION SHALL CONFORM TO THE APPLICABLE PROVISIONS OF THE STATE OF CALIFORNIA STANDARD SPECIFICATIONS (CALTRANS), LATEST EDITION, THE LATEST EDITION OF THE COUNTY OF SANTA CRUZ DESIGN CRITERIA MANUAL, SOQUEL CREEK WATER DISTRICT STANDARDS, THE CITY OF CAPITOLA STANDARD DETAILS, THE UNIFORM BUILDING CODE AND ALL OTHER APPLICABLE FEDERAL AND STATE LAWS.
5. ALL UNDERGROUND UTILITIES WITHIN THE ROADWAY AND UNDER CURB, GUTTER AND SIDEWALK SHALL BE INSTALLED PRIOR TO THE PLACEMENT OF NEW CURB, GUTTER, SIDEWALK AND PAVEMENT BY OTHERS.
6. THE LOCATIONS OF EXISTING UTILITIES AS SHOWN ON THE PLANS WERE OBTAINED FROM UTILITY COMPANIES AND MAY NOT REPRESENT TRUE LOCATION. IT IS THE CONTRACTOR'S RESPONSIBILITY TO VERIFY THE LOCATION AND DEPTH OF THESE UTILITIES PRIOR TO CONSTRUCTION, AND TO NOTIFY THE PROJECT ENGINEER IN CASE OF CONFLICT.
7. CONSTRUCTION STAKING AND COORDINATION WILL BE DONE BY THE ENGINEER, BOWMAN & WILLIAMS, 1011 CEDAR STREET (P.O. BOX 1621), SANTA CRUZ, CA 95061. THE CONTRACTOR SHALL NOTIFY THE PROJECT ENGINEER (426-3560) 72 HOURS PRIOR TO THE NEED FOR CONSTRUCTION STAKING.
8. THE CONTRACTOR SHALL SECURE ALL REQUIRED CONSTRUCTION PERMITS FROM THE DEPARTMENT OF PUBLIC WORKS PRIOR TO THE START OF WORK.
9. NO CHANGES IN THESE IMPROVEMENT PLANS SHALL BE MADE FROM THE DEPARTMENT OF PUBLIC WORKS PRIOR TO THE START OF WORK.
9. NO CHANGES IN THESE IMPROVEMENT PLANS SHALL BE MADE WITHOUT PRIOR APPROVAL OF THE CITY OF CAPITOLA DEPARTMENT OF PUBLIC WORKS AND THE WRITTEN APPROVAL OF THE ENGINEER.
10. THE CONTRACTOR SHALL NOTIFY THE GEOTECHNICAL ENGINEER AT LEAST 48 HOURS PRIOR TO THE START OF CONSTRUCTION.
11. ALL PERMITS, COUNTY AND STATE, SHALL BE OBTAINED BY THE CONTRACTOR PRIOR TO THE START OF CONSTRUCTION.
12. THE DIRECTOR OF PUBLIC WORKS OR HIS AUTHORIZED REPRESENTATIVE SHALL HAVE THE AUTHORITY TO "STOP WORK" IF THE WORK IS NOT BEING DONE IN ACCORDANCE WITH THESE IMPROVEMENT PLANS.
13. ALL CONSTRUCTION SHALL COMPLY WITH THE AMERICAN'S WITH DISABILITIES ACT.

ABBREVIATIONS

A.B.	AGGREGATE BASE	E.P.	EDGE OF PAVEMENT	M.J.	MECHANICAL JOINT	SDCB	STORM DRAIN CATCH BASIN
A.C.	ASPHALT CONCRETE	EA.	EACH	MIN.	MINIMUM	SHT.	SHEET
ADA	AMERICANS WITH DISABILITIES ACT	EL.	ELEVATION	MH	MANHOLE	SS	SANITARY SEWER
B.M.	BENCH MARK	EX., EXIST.	EXISTING	N.I.C.	NOT IN CONTRACT	SSCO	SANITARY SEWER CLEANOUT
B.O.W.	BOTTOM OF WALL	F.F.	FINISH FLOOR	N	NORTH	SSMH	SANITARY SEWER MANHOLE
B.W.	BACK OF WALK	F.G.	FINISH GRADE	N.T.S.	NOT TO SCALE	STA.	STATION
C & G	CURB AND GUTTER	F.H.	FIRE HYDRANT	O.C.	ON CENTER	STD.	STANDARD
C.A.T.V	CABLE TELEVISION	F.O.C.	FACE OF CURB	P.C.C.	PORTLAND CEMENT CONCRETE	TC	TOP OF CURB
C.I.	CAST IRON	FIG.	FIGURE	PG&E	PACIFIC GAS AND ELECTRIC	TW	TOP OF WALL
CL	CENTER LINE	FLG.	FLANGE	PL	PROPERTY LINE	T.V.	TELEVISION
CONC.	CONCRETE	FL	FLOWLINE	PVC	POLYVINYL CHLORIDE	TYP.	TYPICAL
CONST.	CONSTRUCT	G.V.	GATE VALVE	PVMT	PAVEMENT	V.	VALVE
DET.	DETAIL	GND.	GROUND	R/W	RIGHT OF WAY	V.I.F.	VERIFY IN FIELD
DIA.	DIAMETER	H.V.	HORIZONTAL AND VERTICAL CONTROL	R.C.	RELATIVE COMPACTION	W	WEST
DIM	DIMENSION	INV.	INVERT	RCP	REINFORCED CONCRETE PIPE	WM	WATER METER
DN	DOWN	JP	JOINT POLE	REQ'D.	REQUIRED	WS	WATER SERVICE
DS	DOWN SPOUT	L.F.	LINEAR FEET	S/W	SIDEWALK	WV	WATER VALVE
DWG.	DRAWING	LAT.	LATERAL	S	SOUTH	W/	WITH
DWY.	DRIVEWAY	MAX.	MAXIMUM	SD	STORM DRAIN	W/O	WITHOUT
E	EAST						

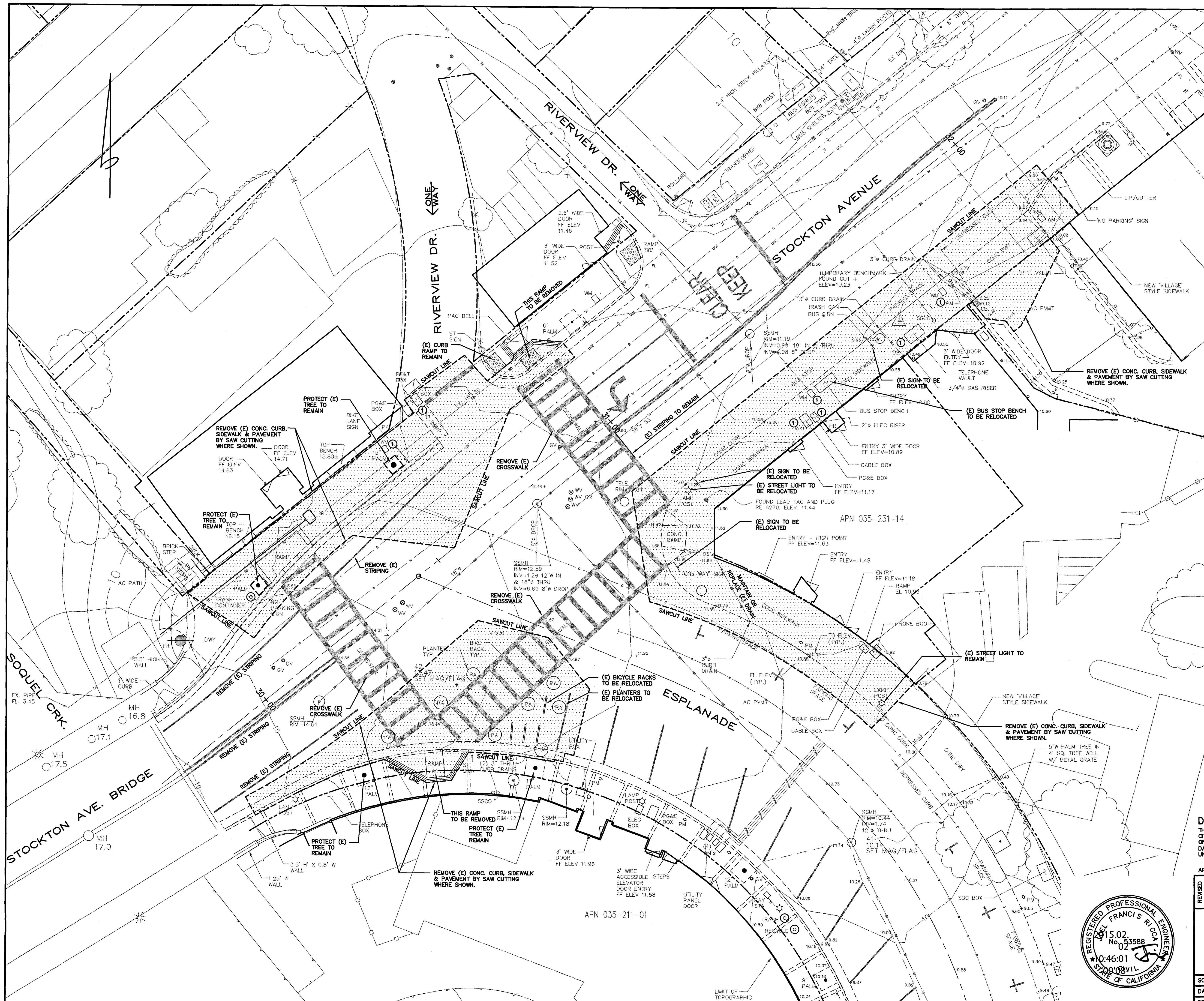
DISCLAIMER
 THE DATA SET FORTH ON THIS SHEET IS THE PROPERTY OF BOWMAN & WILLIAMS CONSULTING CIVIL ENGINEERS. IT IS AN INSTRUMENT OF SERVICE AND MAY NOT BE REPRODUCED, ALTERED, OR USED WITHOUT THE CONSENT OF THE ENGINEER. THE PROPER ELECTRONIC TRANSFER OF DATA SHALL BE THE USER'S RESPONSIBILITY WITHOUT LIABILITY TO THE ENGINEER. UNAUTHORIZED USE IS PROHIBITED.

APN 035-211-01, 02, 03 & 04



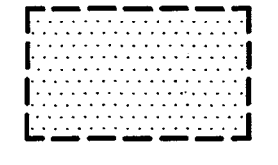
BOWMAN & WILLIAMS CONSULTING CIVIL ENGINEERS 1011 CEDAR STREET SANTA CRUZ, CA 95060 (831) 426-3560		PROJECT PLAN & GENERAL NOTES IMPROVEMENT PLANS STOCKTON AVENUE & ESPLANADE INTERSECTION THE CITY OF CAPITOLA, CALIFORNIA	
SCALE 1"= 30'	DRAWN JFR/TPC	JOB NO. 25422	SHEET
DATE JANUARY 14, 2015	CHECKED JFR	INDEX SOQUEL 2	C2.0
DESIGN JFR	DWG NAME 25422-2_C2	FILE NO. 25422	OF 9

u:\BAM\25400\25422 City of Capitola Esplanade\veg\Stockton Esplanade\25422-2_C2REV1.dwg, 1/14/2015 9:14:11 AM, KIP.pcs

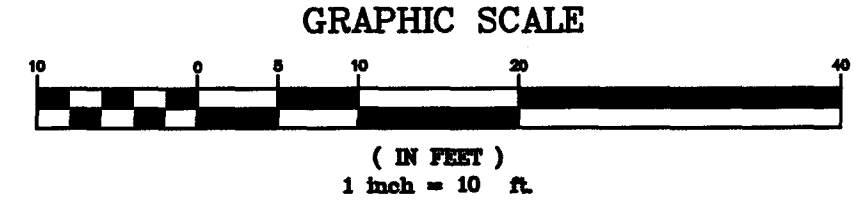


DEMOLITION NOTES

1. (E) UTILITY VAULTS, METERS AND BOXES SHALL BE ADJUSTED TO NEW GRADE OR REPLACED AT THE DIRECTION OF THE UTILITY COMPANY.
2. DEMOLITION SHALL CONSIST OF REMOVING AND DISPOSAL OF ALL EXISTING CONCRETE, ASPHALTIC CONCRETE, AGGREGATE BASE, AND ANY OTHER SURFACE COVERING OR DEBRIS.
3. ALSO REQUIRING REMOVAL WITHIN THE LIMIT OF WORK WILL BE PARKING METERS, TRASH RECEPTACLES, AND BICYCLE RACKS. THESE SHALL BE SALVAGED TO THE CITY.
4. SAW CUT SHALL BE DONE TO PRODUCE A STRAIGHT SOLID VERTICAL FACE OF (E) MATERIAL WHICH TO ABUT NEW PAVEMENT AGAINST.



APPROXIMATE AREA TO BE DEMOLISHED



DISCLAIMER

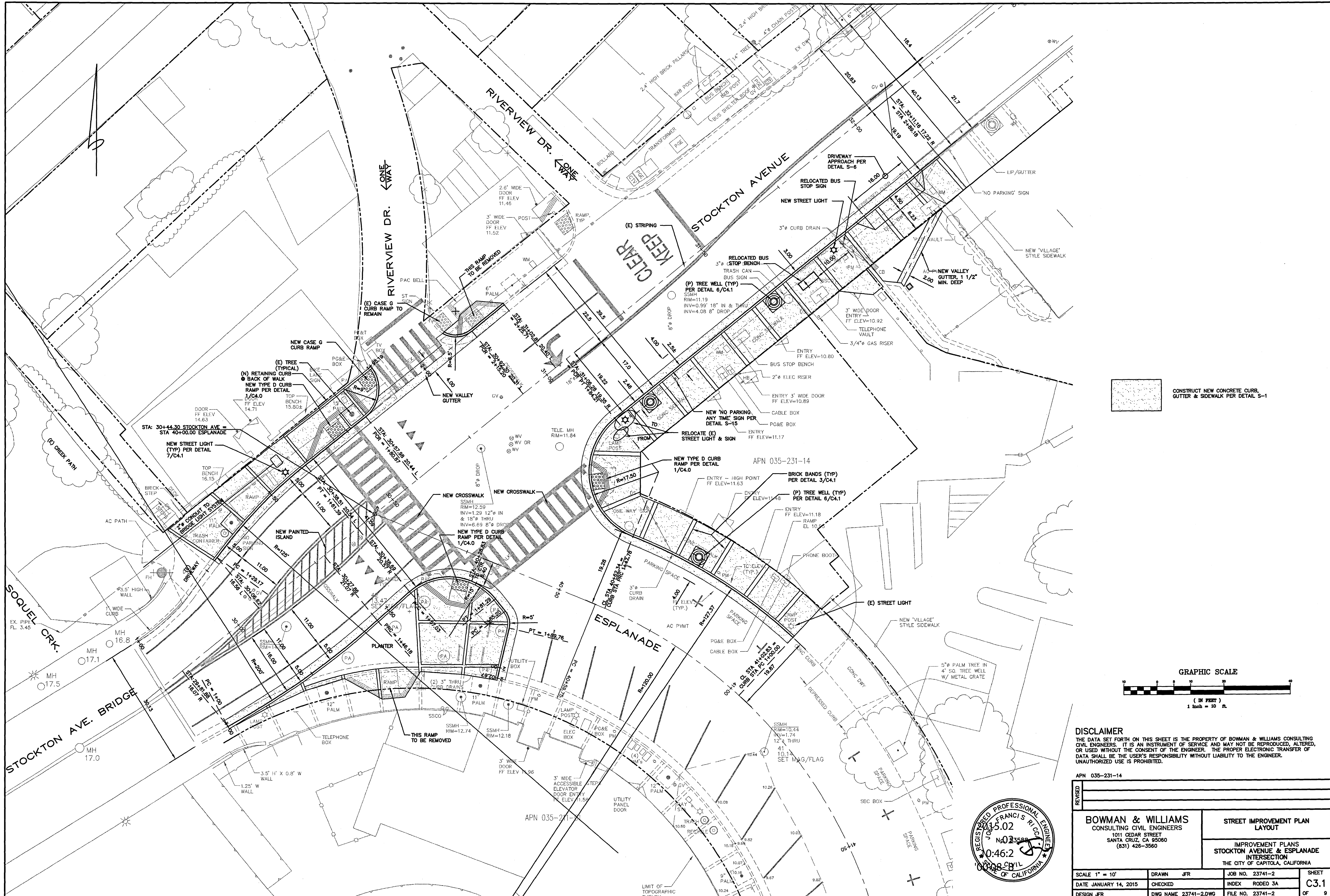
THE DATA SET FORTH ON THIS SHEET IS THE PROPERTY OF BOWMAN & WILLIAMS CONSULTING CIVIL ENGINEERS. IT IS AN INSTRUMENT OF SERVICE AND MAY NOT BE REPRODUCED, ALTERED, OR USED WITHOUT THE CONSENT OF THE ENGINEER. THE PROPER ELECTRONIC TRANSFER OF DATA SHALL BE THE USER'S RESPONSIBILITY WITHOUT LIABILITY TO THE ENGINEER. UNAUTHORIZED USE IS PROHIBITED.

APN 035-231-14

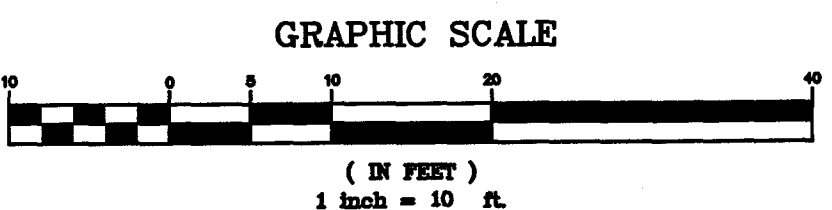


BOWMAN & WILLIAMS CONSULTING CIVIL ENGINEERS 1011 CEDAR STREET SANTA CRUZ, CA 95060 (831) 426-3560		STREET IMPROVEMENT PLAN DEMOLITION IMPROVEMENT PLANS STOCKTON AVENUE & ESPLANADE INTERSECTION THE CITY OF CAPITOLA, CALIFORNIA	
SCALE 1" = 10'	DRAWN JFR	JOB NO. 23741-2	SHEET
DATE JANUARY 14, 2015	CHECKED	INDEX RODEO 3A	C3.0
DESIGN JFR	DWG NAME 23741-2-DWG	FILE NO. 23741-2	OF 9

J:\B&W\25400\25422 City of Capitola Esplanade.dwg\Stockton-Esplanade\25422-2_C3REV1.dwg, 1/14/2015 9:00:49 AM, KIP.pcl



CONSTRUCT NEW CONCRETE CURB, GUTTER & SIDEWALK PER DETAIL S-1

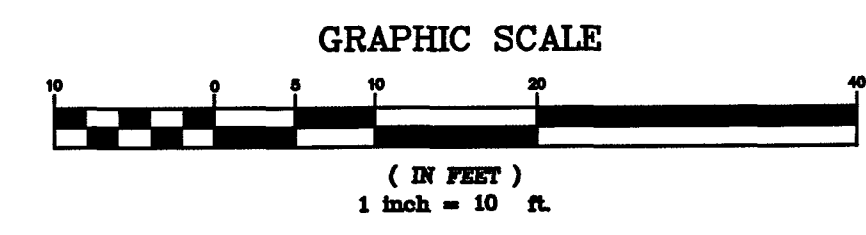
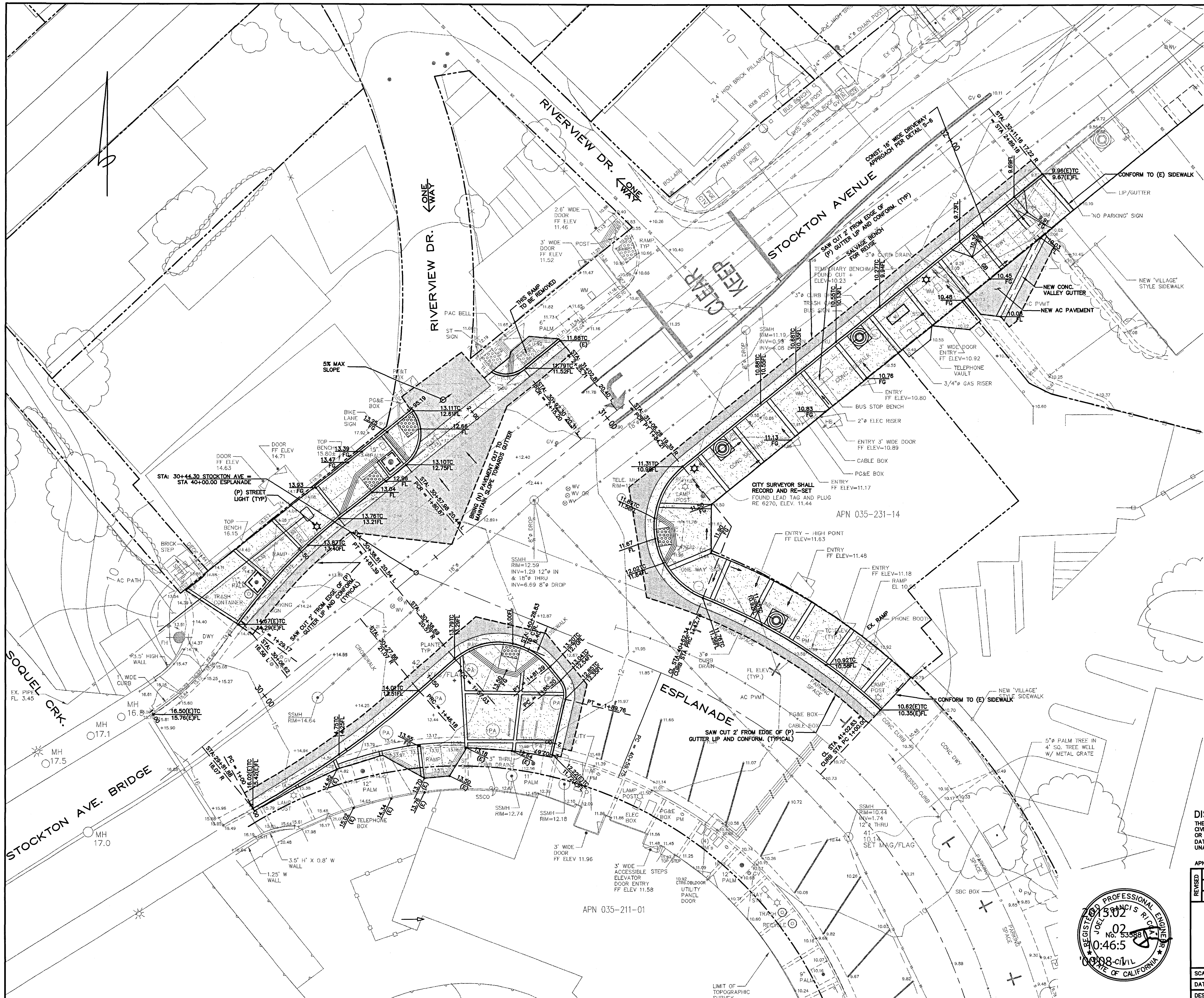


DISCLAIMER
 THE DATA SET FORTH ON THIS SHEET IS THE PROPERTY OF BOWMAN & WILLIAMS CONSULTING CIVIL ENGINEERS. IT IS AN INSTRUMENT OF SERVICE AND MAY NOT BE REPRODUCED, ALTERED, OR USED WITHOUT THE CONSENT OF THE ENGINEER. THE PROPER ELECTRONIC TRANSFER OF DATA SHALL BE THE USER'S RESPONSIBILITY WITHOUT LIABILITY TO THE ENGINEER. UNAUTHORIZED USE IS PROHIBITED.

APN 035-231-14			
REVISION			
BOWMAN & WILLIAMS CONSULTING CIVIL ENGINEERS 1011 CEDAR STREET SANTA CRUZ, CA 95060 (831) 426-3560		STREET IMPROVEMENT PLAN LAYOUT	
IMPROVEMENT PLANS STOCKTON AVENUE & ESPLANADE INTERSECTION THE CITY OF CAPITOLA, CALIFORNIA			
SCALE 1" = 10'	DRAWN JFR	JOB NO. 23741-2	SHEET
DATE JANUARY 14, 2015	CHECKED	INDEX RODEO 3A	C3.1
DESIGN JFR	DWG NAME 23741-2.DWG	FILE NO. 23741-2	OF 9



C:\Users\jfr\Documents\23741-2\23741-2.dwg, 1/14/2015 9:01:41 AM, KIP, cc3



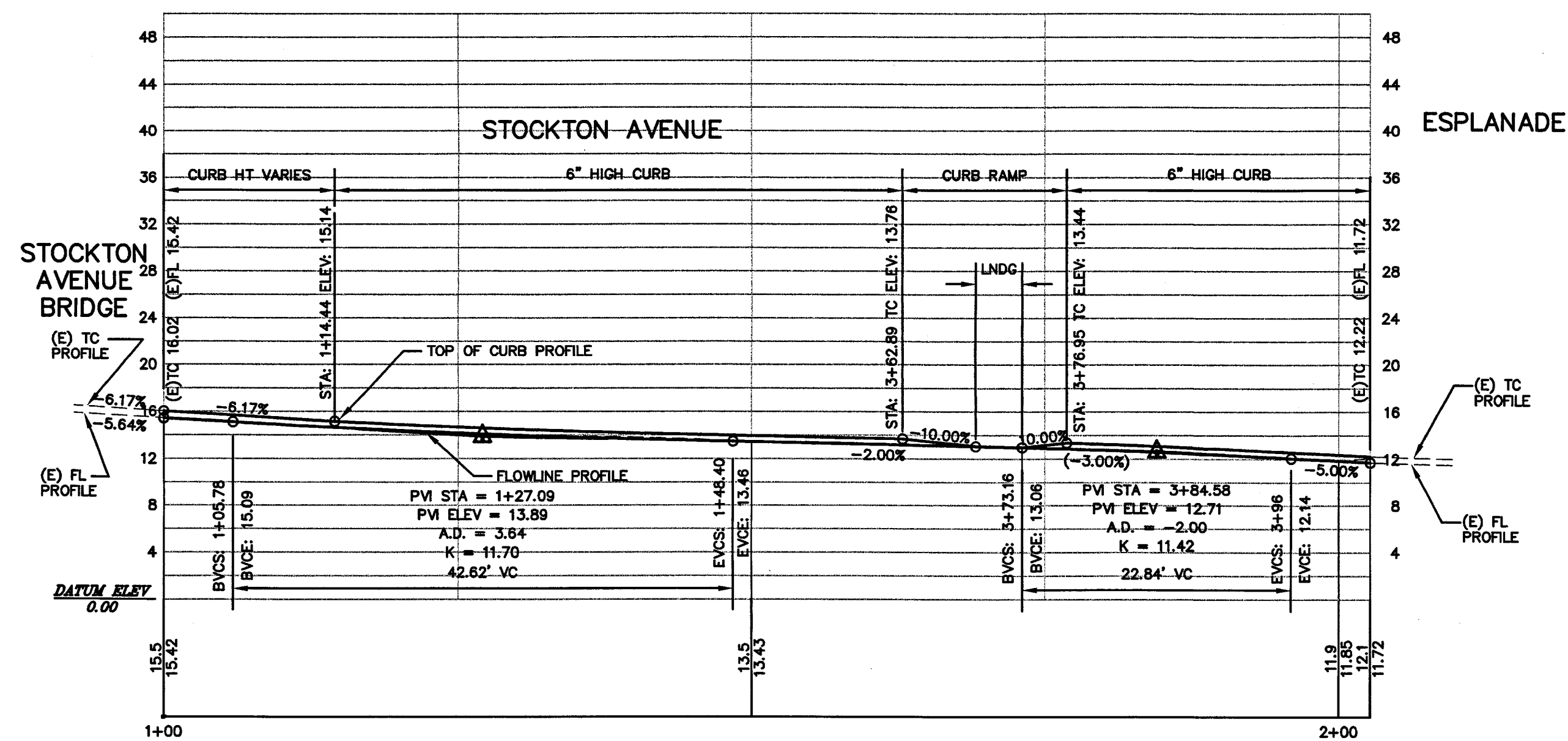
DISCLAIMER
 THE DATA SET FORTH ON THIS SHEET IS THE PROPERTY OF BOWMAN & WILLIAMS CONSULTING CIVIL ENGINEERS. IT IS AN INSTRUMENT OF SERVICE AND MAY NOT BE REPRODUCED, ALTERED, OR USED WITHOUT THE CONSENT OF THE ENGINEER. THE PROPER ELECTRONIC TRANSFER OF DATA SHALL BE THE USER'S RESPONSIBILITY WITHOUT LIABILITY TO THE ENGINEER. UNAUTHORIZED USE IS PROHIBITED.

APN 035-231-14

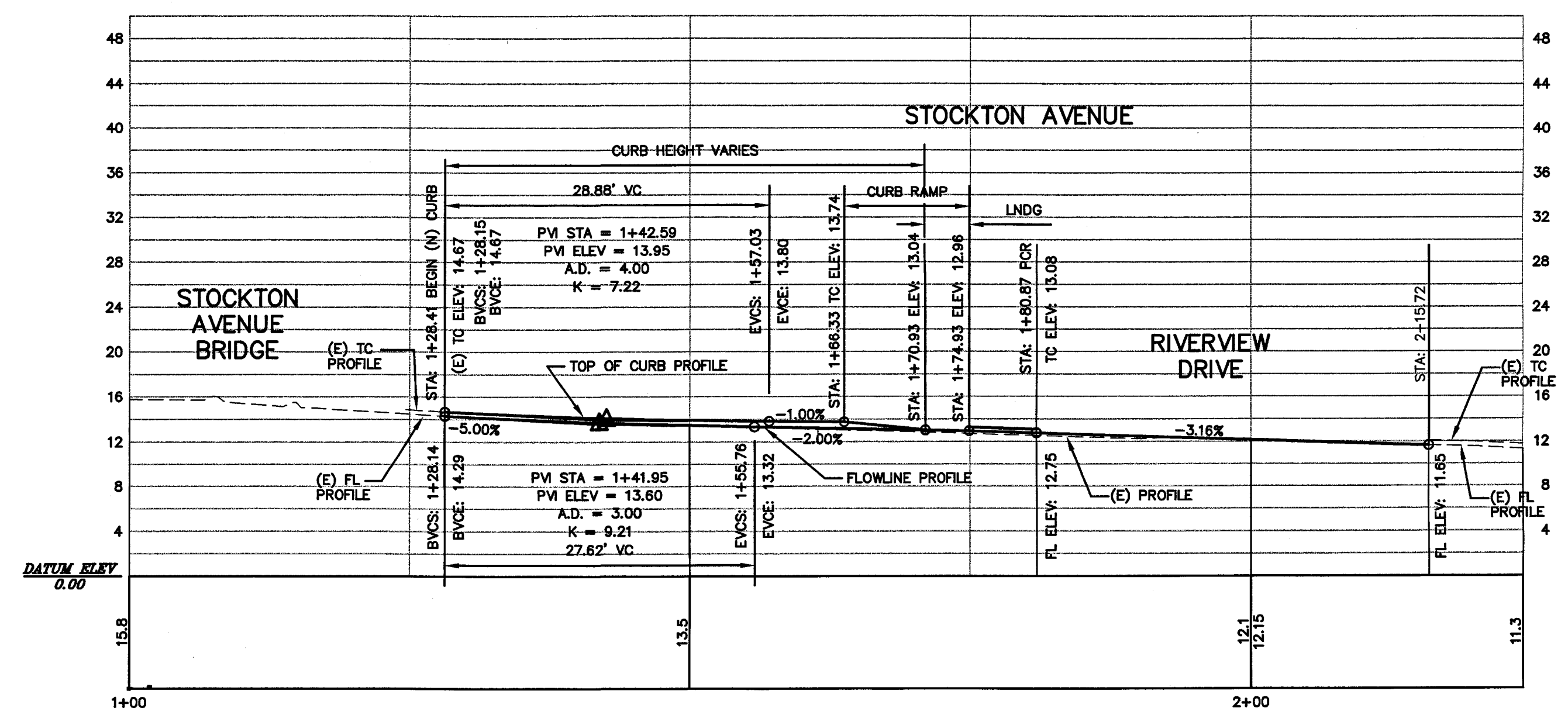


BOWMAN & WILLIAMS CONSULTING CIVIL ENGINEERS 1011 CEDAR STREET SANTA CRUZ, CA 95060 (831) 426-3560		STREET IMPROVEMENT PLAN GRADING IMPROVEMENT PLANS STOCKTON AVENUE & ESPLANADE INTERSECTION THE CITY OF CAPITOLA, CALIFORNIA	
SCALE 1" = 10'	DRAWN JFR	JOB NO. 23741-2	SHEET
DATE JANUARY 14, 2015	CHECKED	INDEX RODEO 3A	C3.2
DESIGN JFR	DWG NAME 23741-2.DWG	FILE NO. 23741-2	OF 9

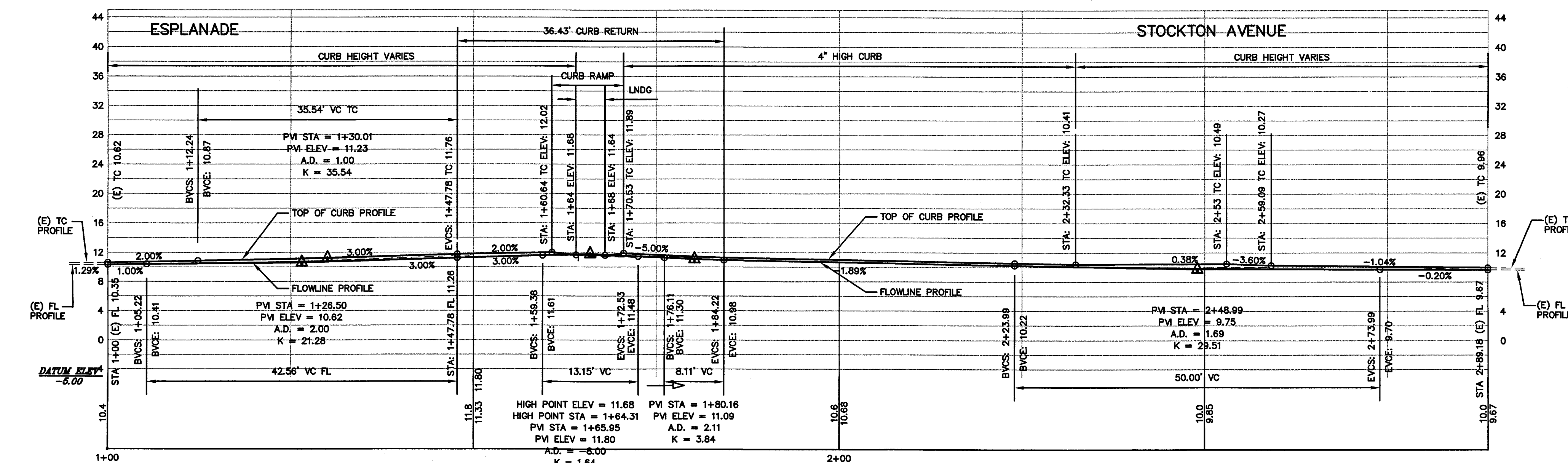
A:\BAW\25400\25422 City of Capitola Esplanade\Map\Stockton-Esplanade\25422-2_C3REV1.dwg, 1/14/2015 9:02:25 AM, APJ/jc



STOCKTON RIGHT TO ESPLANADE RIGHT PROFILE



STOCKTON AVE LEFT PROFILE



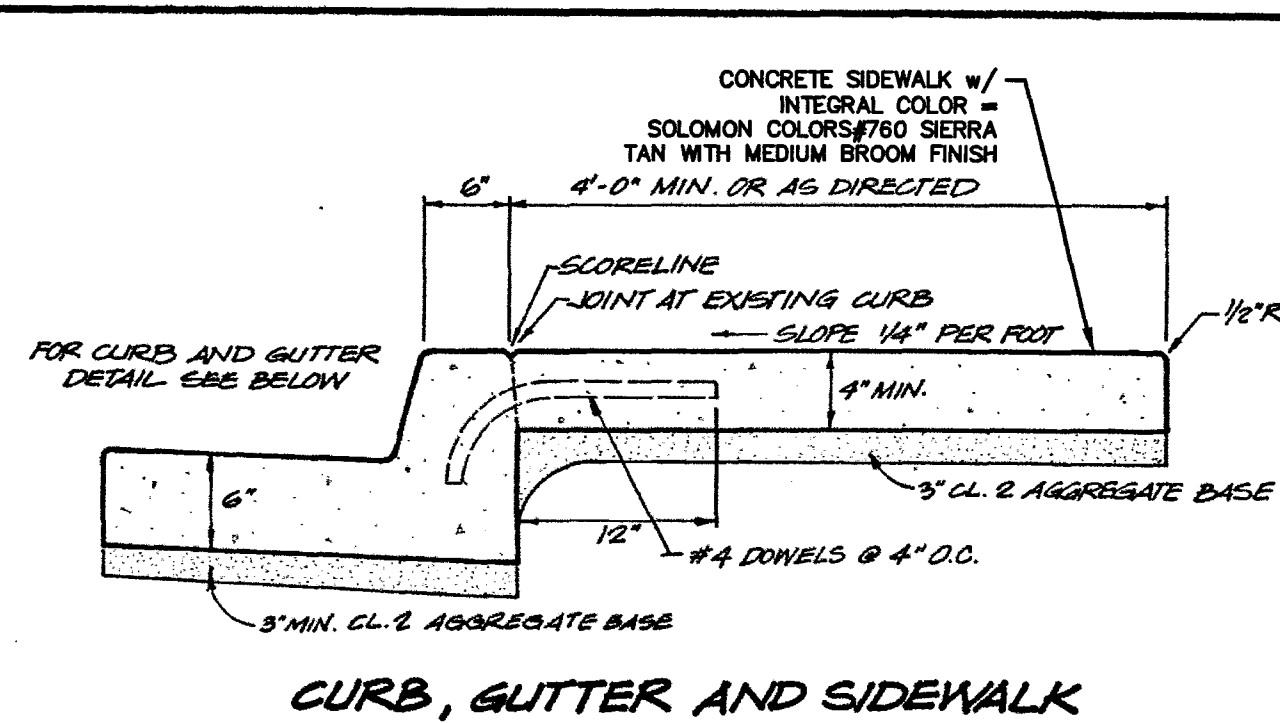
ESPLANADE LEFT TO STOCKTON RIGHT PROFILE

DISCLAIMER
 THE DATA SET FORTH ON THIS SHEET IS THE PROPERTY OF BOWMAN & WILLIAMS CONSULTING CIVIL ENGINEERS. IT IS AN INSTRUMENT OF SERVICE AND MAY NOT BE REPRODUCED, ALTERED, OR USED WITHOUT THE CONSENT OF THE ENGINEER. THE PROPER ELECTRONIC TRANSFER OF DATA SHALL BE THE USER'S RESPONSIBILITY WITHOUT LIABILITY TO THE ENGINEER. UNAUTHORIZED USE IS PROHIBITED.

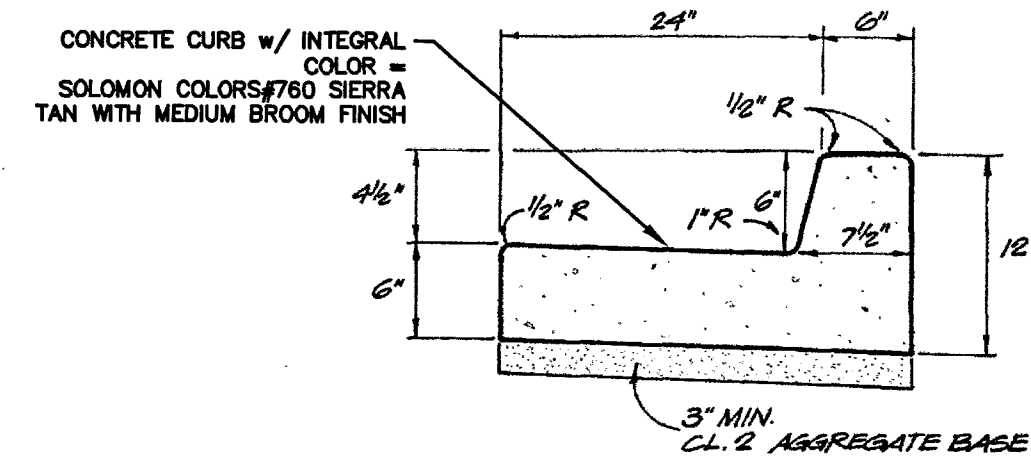
APN 035-231-14



BOWMAN & WILLIAMS CONSULTING CIVIL ENGINEERS 1011 CEDAR STREET SANTA CRUZ, CA 95060 (831) 426-3560		CURB AND GUTTER PROFILES IMPROVEMENT PLANS STOCKTON AVENUE & ESPLANADE INTERSECTION THE CITY OF CAPITOLA, CALIFORNIA	
SCALE 1" = 10' DATE JANUARY 14, 2015 DESIGN JFR	DRAWN JFR CHECKED DWG NAME 23741-2.DWG	JOB NO. 23741-2 INDEX RODEO 3A FILE NO. 23741-2	SHEET C3.3 OF 9

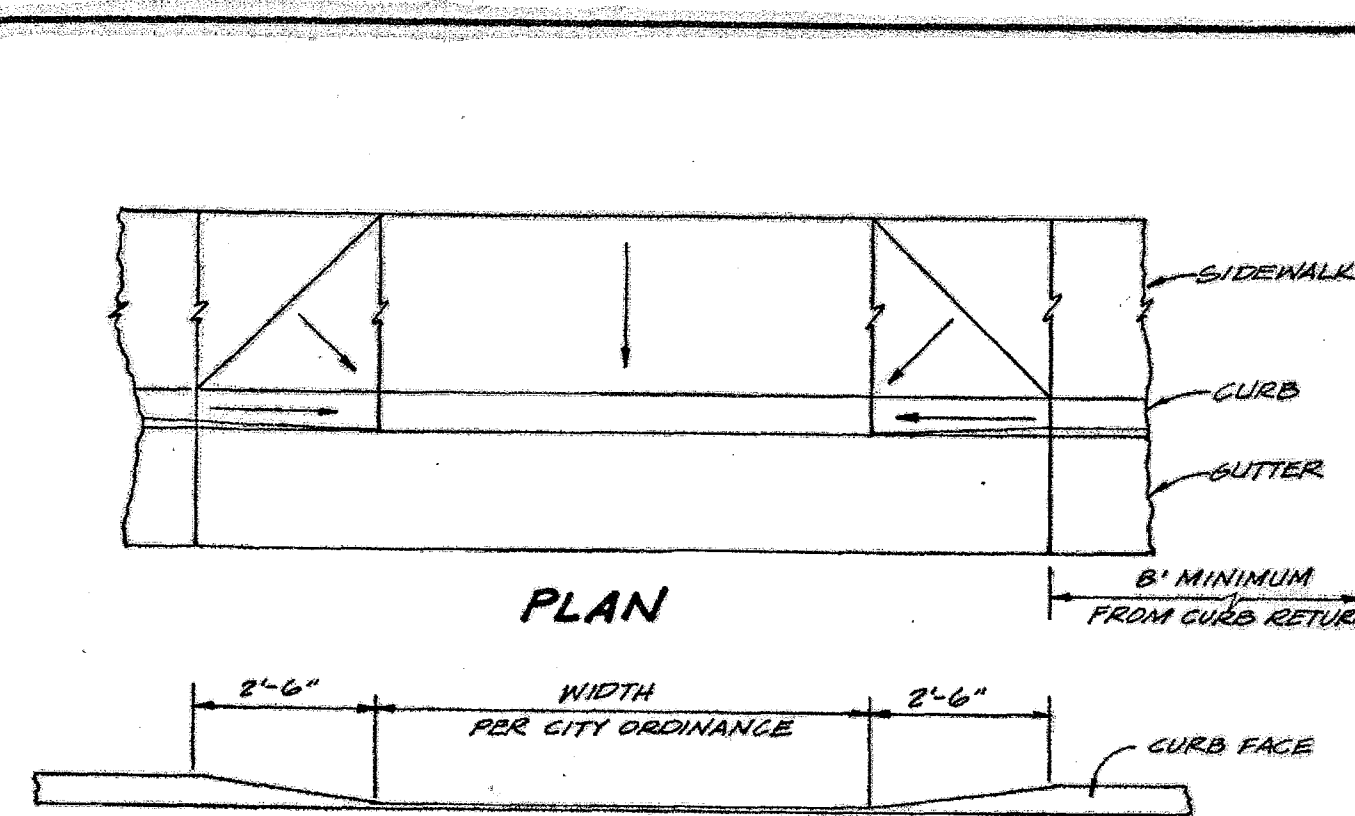


CURB, GUTTER AND SIDEWALK

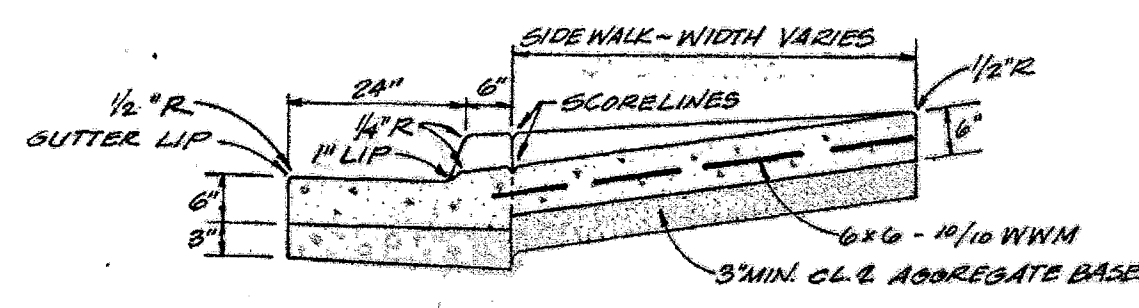


CURB AND GUTTER

REV. DATE	REVISION DESCRIPTION	BY
CITY OF CAPITOLA - CALIFORNIA DEPARTMENT OF PUBLIC WORKS		
CURB, GUTTER AND SIDEWALK DETAIL		
APPROVED _____ DATE _____ PUBLIC WORKS DIRECTOR		
DRAWN <i>SMH</i> CHECKED <i>SMH</i> SCALE <i>NONE</i> 5-1		

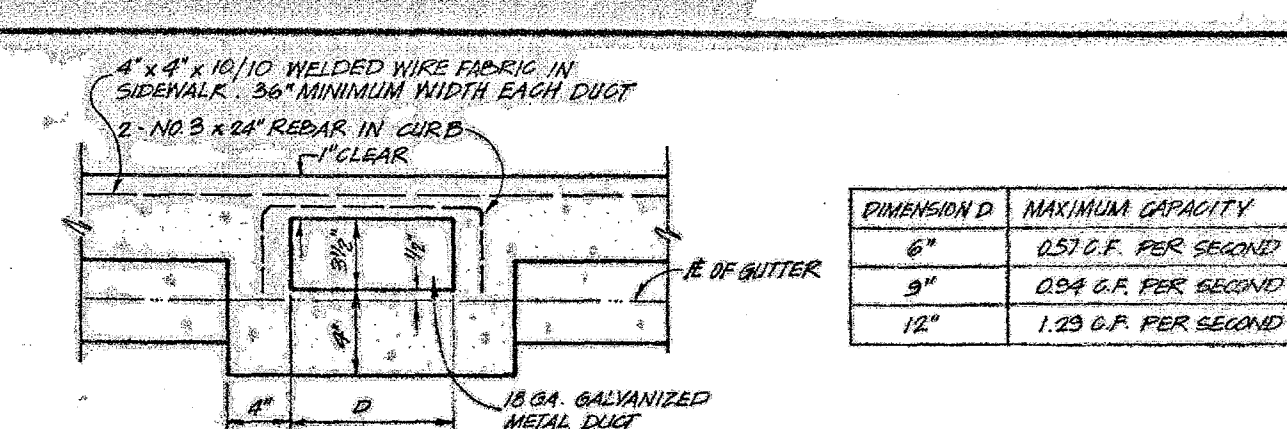


ELEVATION



SECTION OF DRIVEWAY APPROACH

REV. DATE	REVISION DESCRIPTION	BY
CITY OF CAPITOLA - CALIFORNIA DEPARTMENT OF PUBLIC WORKS		
DRIVEWAY APPROACH		
APPROVED _____ DATE _____ PUBLIC WORKS DIRECTOR		
DRAWN <i>SMH</i> CHECKED <i>SMH</i> SCALE <i>NONE</i> 5-6		

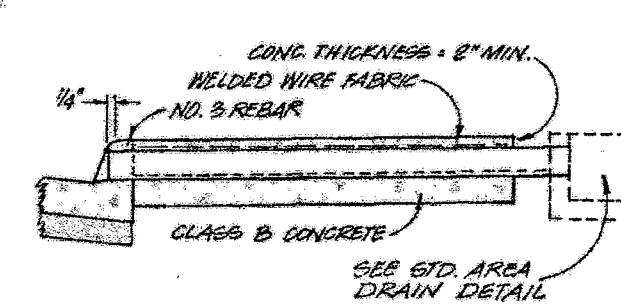


METAL DUCT SECTION

NOTE:
ALL PERSONS SETTING CURB DRAINS AFTER CURB, GUTTER & SIDEWALK HAVE BEEN POURED WILL HAVE TO DIG OUT 6\"/>

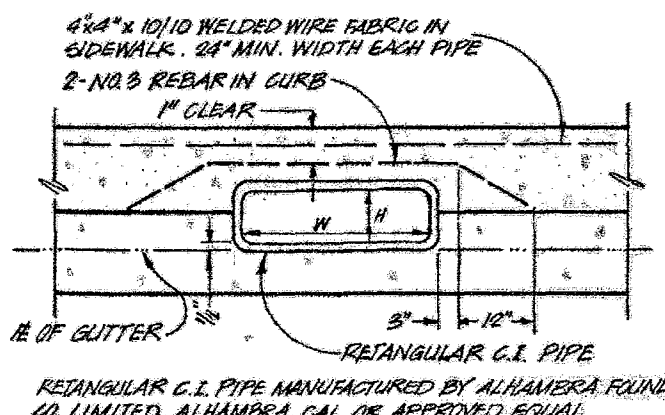
DIMENSION	MAXIMUM CAPACITY
1	1/4
2	5/8
3	1 1/8
4	1 3/4
5	2 1/8
6	3 1/4

RECTANGULAR PIPE SECTION



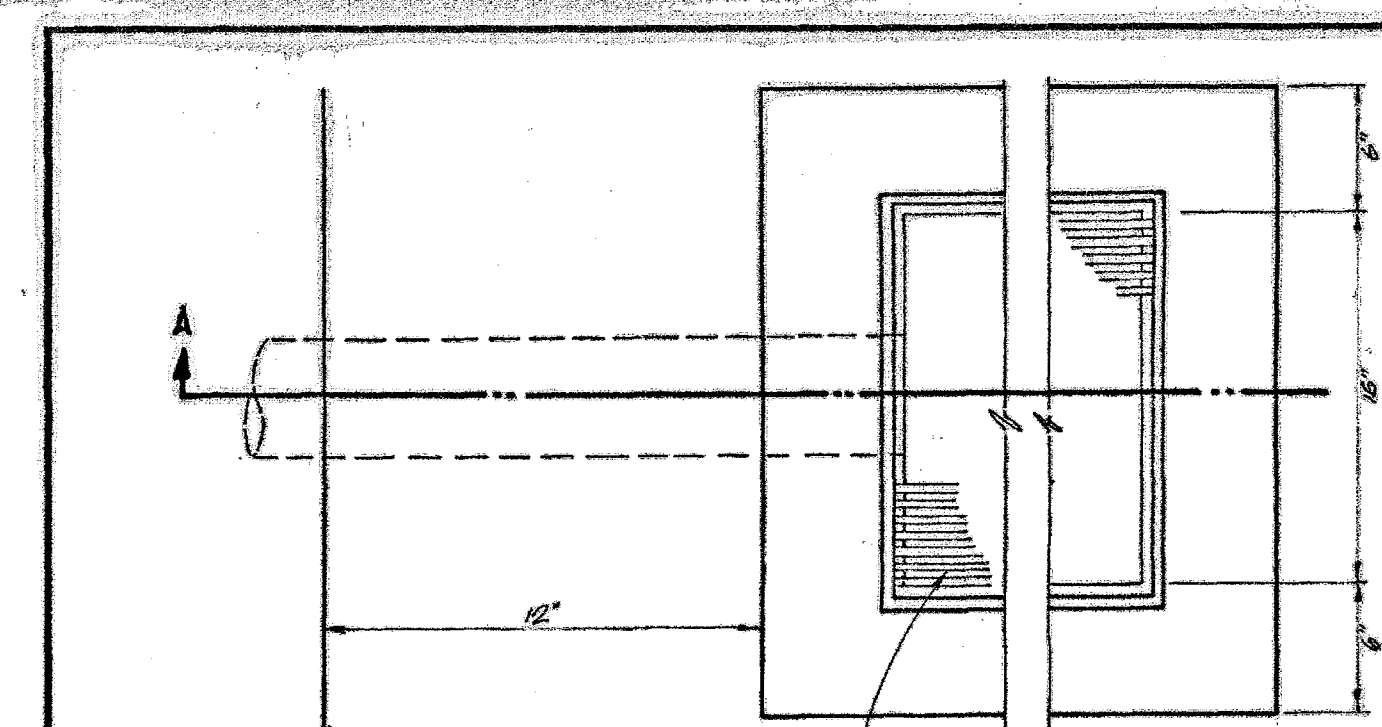
TYPICAL METAL DUCT LONGITUDINAL SECTION
THE CONCRETE BASE AND COVER FOR METALLIC DUCT DRAINS SHALL EXTEND CONTINUOUSLY FROM PROPERTY LINE TO FACE OF CURB.

- NOTES:
- FOR GREATER CAPACITY ADDITIONAL ADJACENT DRAINS MAY BE INSTALLED WITH THE FOLLOWING LIMITATIONS:
A) ADJACENT DRAINS SHALL BE OF ONE TYPE
B) MIN. WIDTH BETWEEN DRAINS SHALL BE 4"
 - ALL CAPACITIES ARE BASED ON:
A) 1/2" x 1/4" FLOWING FULL
B) 1" O.D.U. FOR RECT. DRAINS; 1" I.D.O.D.U. FOR PLASTIC DRAINS
 - METAL DUCT FORM SHALL BE SUPPORTED FROM DISTURBANCE DURING POUR OF CONCRETE BY PILING WITH SAND. TEMPORARY SUPPORT WEDGED IN PLACE OR OTHER SUITABLE MEANS.

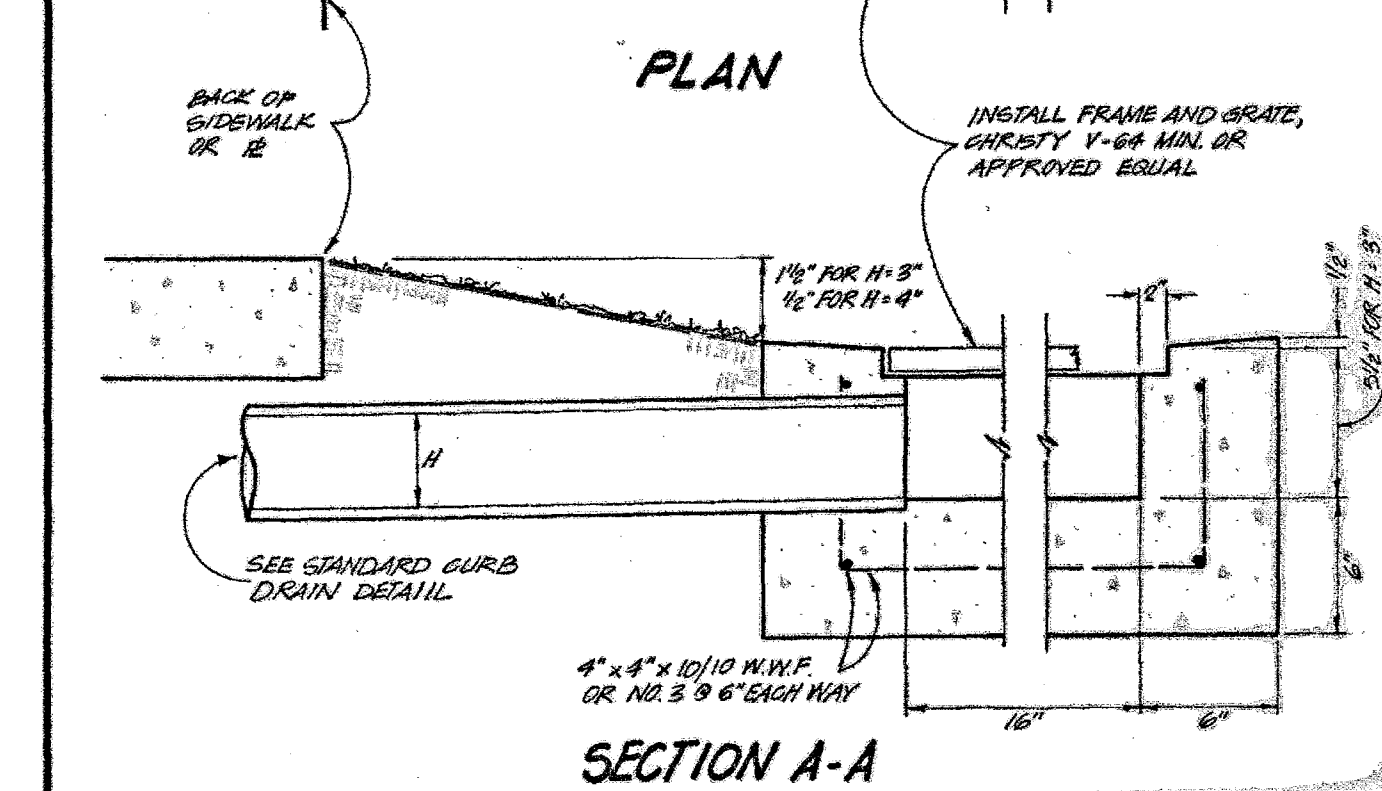


TYP. PLASTIC & C.I. RECTANGULAR PIPE LONGITUDINAL SECTION
NO PIPE JOINTS SHALL BE MADE WITHIN THE SIDEWALK OR CURB.

REV. DATE	REVISION DESCRIPTION	BY
CITY OF CAPITOLA - CALIFORNIA DEPARTMENT OF PUBLIC WORKS		
CURB DRAIN		
APPROVED _____ DATE _____ PUBLIC WORKS DIRECTOR		
DRAWN <i>SMH</i> CHECKED <i>SMH</i> SCALE <i>NONE</i> 5-11		

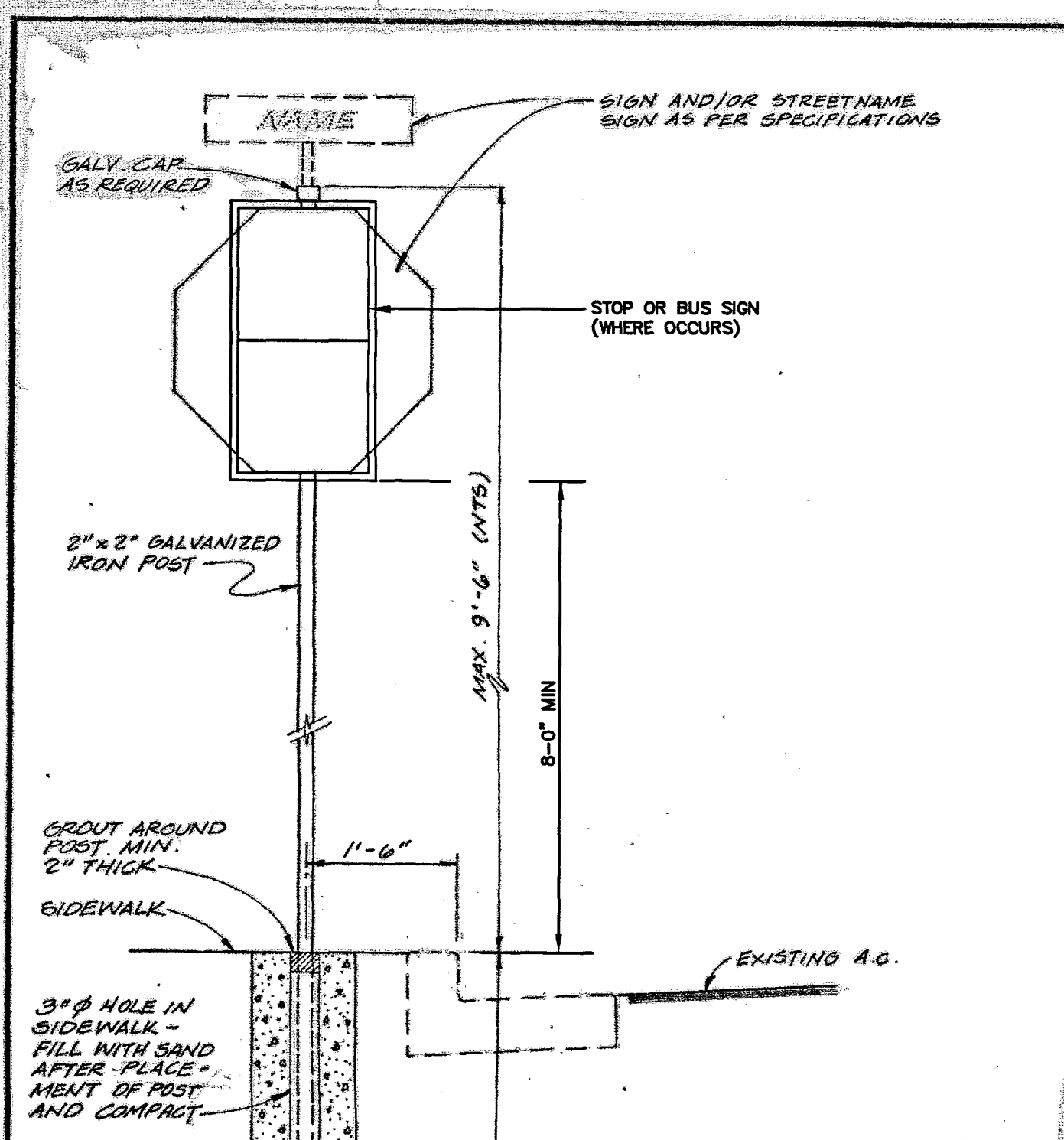


PLAN



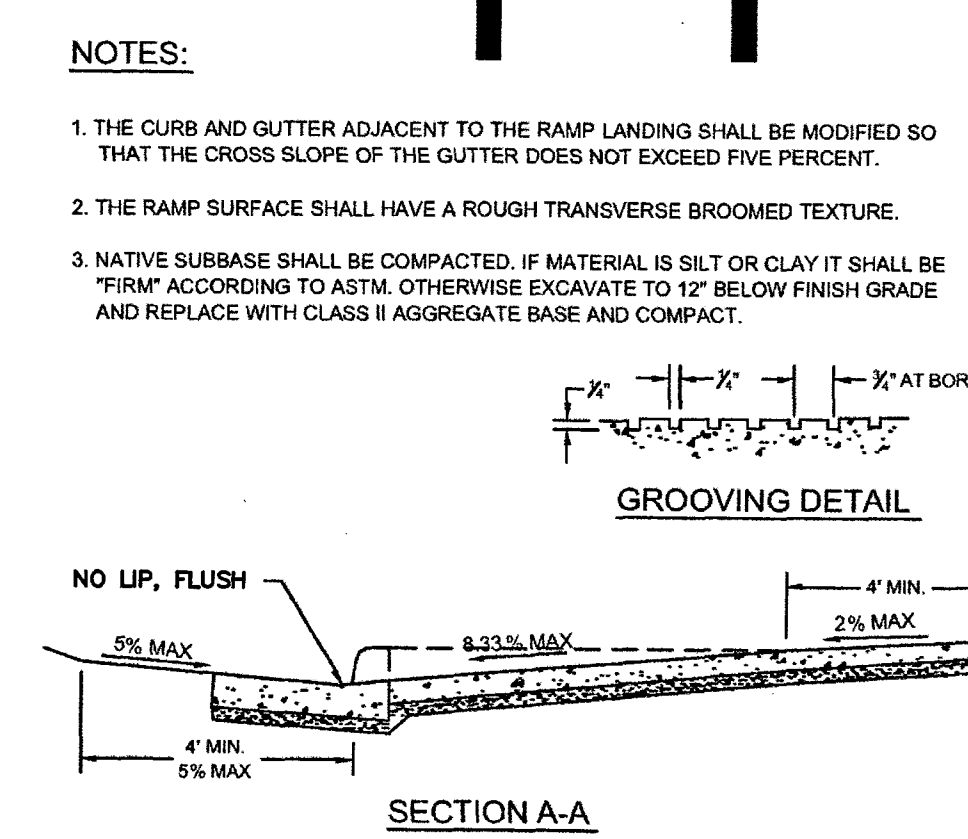
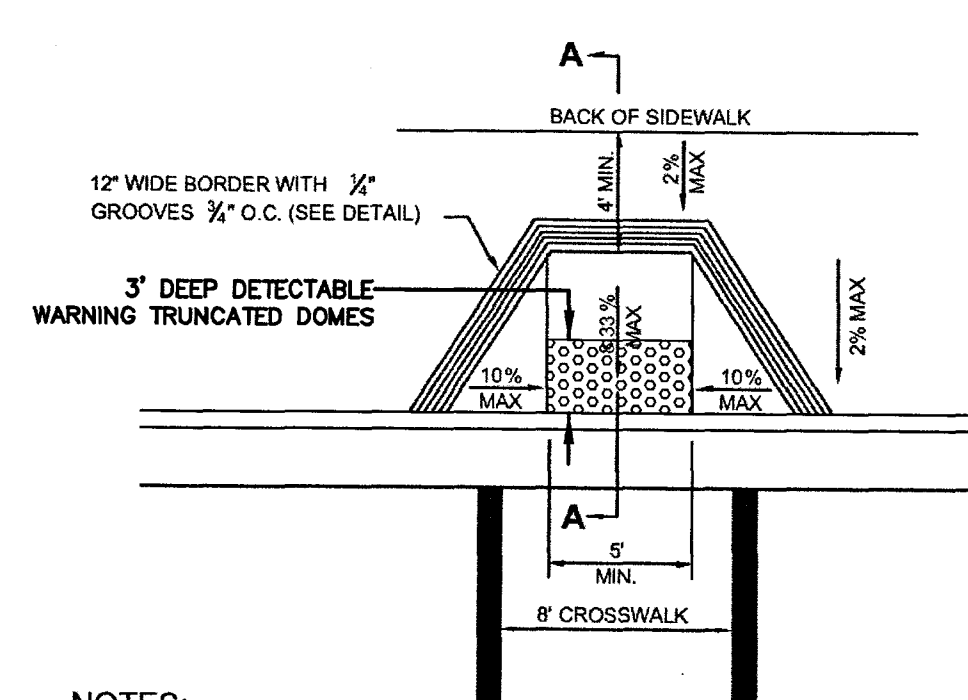
SECTION A-A

REV. DATE	REVISION DESCRIPTION	BY
CITY OF CAPITOLA - CALIFORNIA DEPARTMENT OF PUBLIC WORKS		
AREA DRAIN		
APPROVED _____ DATE _____ PUBLIC WORKS DIRECTOR		
DRAWN <i>SMH</i> CHECKED <i>SMH</i> SCALE <i>NONE</i> 5-12		

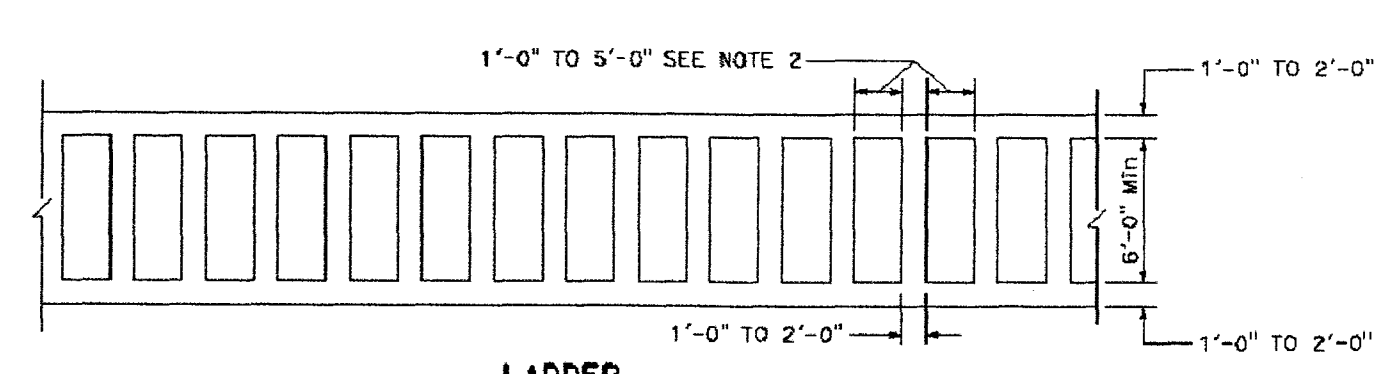


STREET SIGN
SCALE: 3/4" = 1'-0"

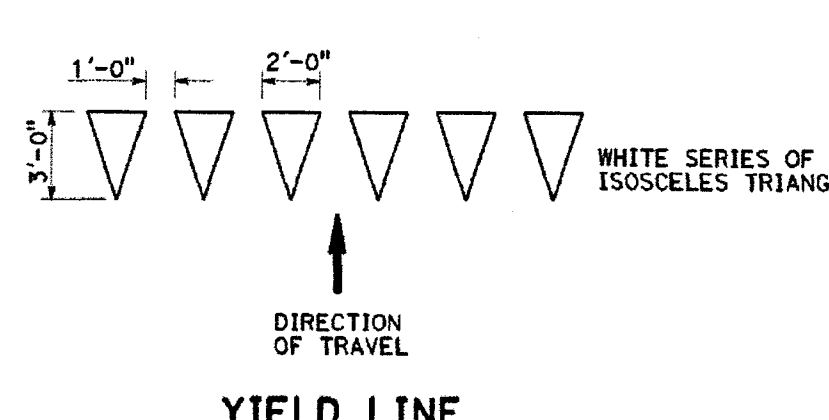
REV. DATE	REVISION DESCRIPTION	BY
CITY OF CAPITOLA - CALIFORNIA DEPARTMENT OF PUBLIC WORKS		
STREET SIGN		
APPROVED _____ DATE _____ PUBLIC WORKS DIRECTOR		
DRAWN <i>SMH</i> CHECKED <i>SMH</i> SCALE <i>NONE</i> 5-15		



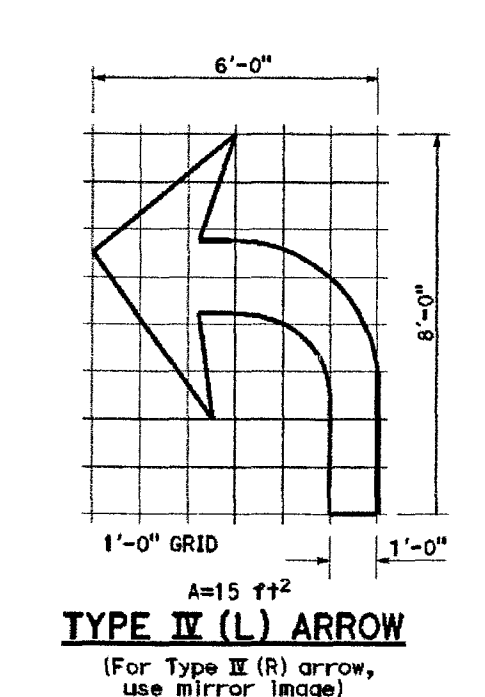
TYPE D CURB RAMP
SCALE: NTS



LADDER



YIELD LINE



TYPE IV (L) ARROW
(For Type II (R) arrow, use mirror image)

PAVEMENT STRIPES AND MARKINGS
SCALE: NTS

- NOTES:
- ALL PAVEMENT STRIPES AND MARKINGS SHALL BE WHITE THERMOPLASTIC CONFORM TO CALTRANS SECTION 84-2 OF THE STANDARD SPECIFICATIONS.
 - SPACING BETWEEN CROSSWALKS STRIPES SHALL NOT EXCEED 2.5 TIMES WIDTH OF THE LONGITUDINAL LINE.
 - EXISTING PAVEMENT STRIPES AND MARKINGS SHALL BE REMOVED AND SURFACES ARE WHICH TO RECEIVE STRIPES AND MARKINGS SHALL BE CLEAN OF ALL DIRT AND LOOSE MATERIAL.
 - STRIPES AND MARKINGS SHALL BE APPLIED ONLY ON DRY SURFACES AND ONLY DURING OF FAVORABLE WEATHER.
 - THE CONTRACTOR SHALL PROVIDE APPROPRIATE TRAFFIC DETOUR OR OTHER MEANS TO PROTECT THE STRIPES AND MARKINGS UNTIL THEY HANDLE NORMAL TRAFFIC CONDITION.



DISCLAIMER
THE DATA SET FORTH ON THIS SHEET IS THE PROPERTY OF BOWMAN & WILLIAMS CONSULTING CIVIL ENGINEERS. IT IS AN INSTRUMENT OF SERVICE AND MAY NOT BE REPRODUCED, ALTERED, OR USED WITHOUT THE CONSENT OF THE ENGINEER. THE PROPER ELECTRONIC TRANSFER OF DATA SHALL BE THE USER'S RESPONSIBILITY WITHOUT LIABILITY TO THE ENGINEER. UNAUTHORIZED USE IS PROHIBITED.

APN 035-211-01, 02, 03 & 04			
BOWMAN & WILLIAMS CONSULTING CIVIL ENGINEERS 1011 CEDAR STREET SANTA CRUZ, CA 95060 (831) 426-3560		STANDARD DETAILS	
IMPROVEMENT PLANS STOCKTON AVENUE & ESPLANADE INTERSECTION THE CITY OF CAPITOLA, CALIFORNIA			
SCALE 1" = 10"	DRAWN JFR	JOB NO. 23741-2	SHEET
DATE JANUARY 14, 2015	CHECKED	INDEX RODEO 3A	C4.0
DESIGN JFR	DWG NAME 25422-2_C4	FILE NO. 25422-2	OF 9

SOQUEL CREEK WATER DISTRICT NOTES:

1. ALL WATERWORKS RELATED CONSTRUCTION SHALL BE PERFORMED IN ACCORDANCE WITH THE STANDARD SPECIFICATIONS, STANDARD PLANS, AND THE DIRECTIONS OF WITH THE STANDARD SPECIFICATIONS, STANDARD PLANS, AND THE DIRECTIONS OF THE CHIEF ENGINEER OF THE SOQUEL CREEK WATER DISTRICT. A COPY OF THE SOQUEL CREEK WATER DISTRICT STANDARD SPECIFICATIONS AND STANDARD PLANS SHALL BE MADE AVAILABLE ON THE JOB SITE AT ALL TIMES. COPIES MAY BE OBTAINED AT THE OFFICES OF THE SOQUEL CREEK WATER DISTRICT, 5160 SOQUEL DRIVE, SOQUEL, CA. 95073.
2. THE CONTRACTOR SHALL NOTIFY THE CHIEF ENGINEER OF THE SOQUEL CREEK WATER DISTRICT A MINIMUM OF 2 WORKING DAYS PRIOR TO COMMENCING WORK. THE CONTRACTOR SHALL SCHEDULE ALL INSPECTIONS WITH THE SOQUEL CREEK WATER DISTRICT A MINIMUM OF 24 HOURS IN ADVANCE OF NEEDING SUCH INSPECTION. ALL VALVES SHALL ONLY BE OPERATED BY THE PERSONNEL OF THE SOQUEL CREEK WATER DISTRICT. SYSTEM SHUTDOWNS FOR THE INTERCONNECTION OF NEW IMPROVEMENTS TO THE EXISTING SYSTEM SHALL BE SCHEDULED WITH THE SOQUEL CREEK WATER DISTRICT A MINIMUM OF 3 WORKING DAYS IN ADVANCE FOR RESIDENTIAL AREAS AND 5 WORKING DAYS IN ADVANCE FOR COMMERCIAL AND INDUSTRIAL AREAS.

TECHNICAL SPECIFICATIONS

CURB, GUTTER, & SIDEWALK

1. CONCRETE SHALL BE SIX SACK MIX, CLASS "A".
2. CONCRETE COLOR SHALL BE SOLOMON COLORS#760 SIERRA TAN WITH MEDIUM BROOM FINISH. CONFIRM COLOR WITH CITY PRIOR TO CONSTRUCTION.
3. PROVIDE EXPANSION JOINT EVERY 60 FT WITH WEAKENED PLANE JOINT EVERY 12 FT.

REINFORCING STEEL

1. REINFORCING STEEL SHALL COMPLY WITH ASTM A615, GRADE 60.
2. SUPPORTING DEVICES FOR THE REINFORCEMENT SHALL BE SPACED SUFFICIENTLY TO PROPERLY SUPPORT THE REINFORCEMENT AND PREVENT EXCESSIVE DEFLECTION.
3. THE FOLLOWING MINIMUM BAR COVERS SHALL BE MAINTAINED:
CONCRETE CAST AGAINST AND PERMANENTLY EXPOSED TO EARTH: 3 INCHES
CONCRETE EXPOSED TO EARTH OR WEATHER: 1 1/2 INCHES

EARTHWORK & GRADING

1. ALL EARTHWORK SHALL BE DONE IN ACCORDANCE TO SECTIONS 16 AND 19 OF CALTRANS STANDARD SPECIFICATIONS.
2. ALL EARTHWORK SHALL BE DONE UNDER THE SUPERVISION OF THE CITY SOIL ENGINEER. THE CONTRACTOR SHALL NOTIFY AND COORDINATE WITH THE CITY FOR ANY CONFLICTS ENCOUNTERED DURING THE EARTHWORK OPERATION. ALL ENGINEERED FILL MATERIAL SHALL BE REVIEWED BY THE CITY FOR APPROVAL.

ASPHALT CONCRETE

1. ASPHALT CONCRETE SHALL BE 1/2" MAXIMUM TYPE A MEDIUM PER CALTRANS SECTION 39.
2. PAVEMENT ASPHALT BINDER GRADE FOR HOT MIX SHALL BE PG 64-10 CONFORMING TO CALTRANS SECTION 82.
3. SURFACE TO RECEIVE ASPHALT MIX SHALL BE PREPARED CONFORMING TO CALTRANS SPECIFICATION SECTION 39-1.09. TACK COAT FOR SURFACES RECEIVING HOT MIX ASPHALT LEVELING COURSE SHALL CONFORM TO CALTRANS SECTION 10-2.09.

AGGREGATE BASE

1. AGGREGATE BASE SHALL CLASS 2 CONFORMING TO CALTRANS SECTION 26.

THERMOPLASTIC STRIPING

1. ALL NEW PAVEMENT STRIPING SHALL BE THERMOPLASTIC CONFORMING TO CALTRANS SECTION 84-2.
2. THERMOPLASTIC MATERIAL FOR PAVEMENT MARKINGS SHALL BE APPLIED AT A THICKNESS OF 0.100-INCH.
3. THERMOPLASTIC PAVEMENT MARKINGS SHALL NOT BE INSTALLED ON PAVEMENT MARKERS, MANHOLE AND WATER VALVE COVERS, SURVEY MONUMENTS, AND ANY UTILITY FACILITIES.

IRRIGATION

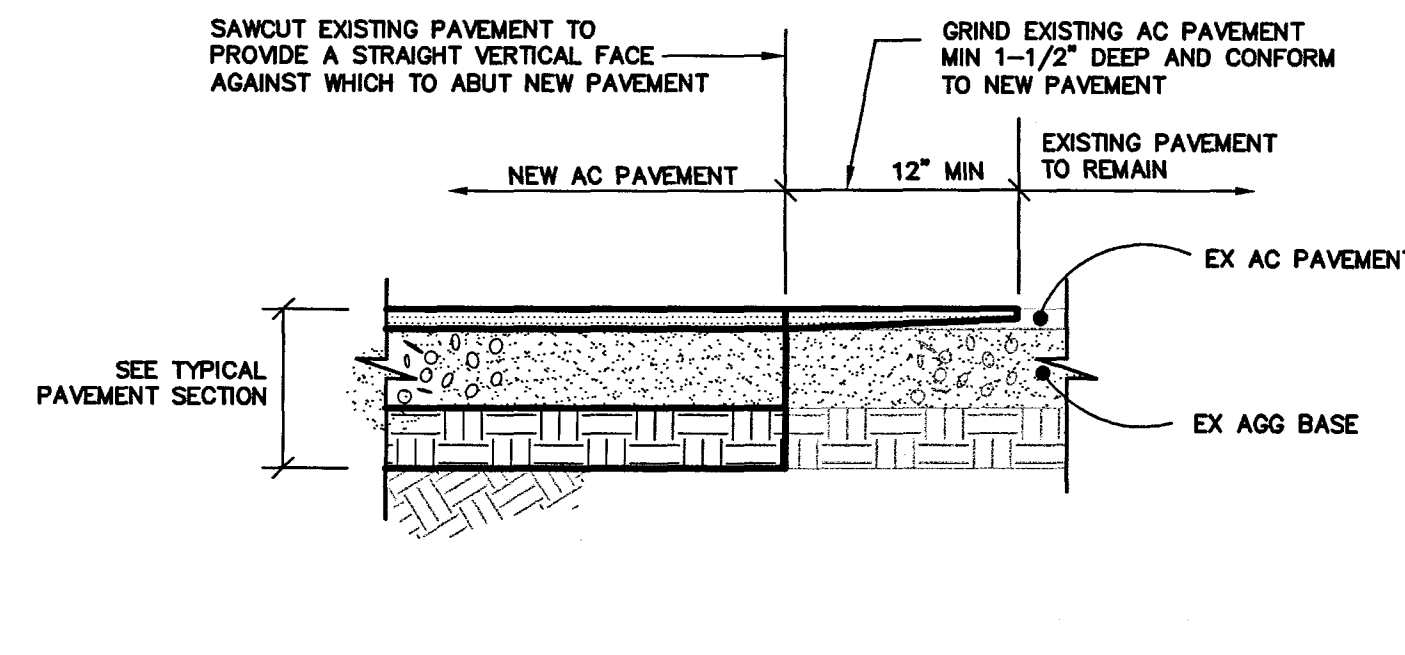
1. POINT OF CONNECTION SHALL BE TAKEN FROM THE EXISTING SERVICE LINE. THE CONTRACTOR SHALL TIE OFF THE SERVICE LINE AND INSTALL THE BACKFLOW DEVICE AND MAINLINE AS NOTED ON THE PLAN.
2. CONTROLLER SHALL BE PEDESTAL MOUNTED AND LOCATED AT THE LOCATION PER THE CITY OF CAPITOLA. PROGRAMMING OF THE CONTROLLER SHALL BE THE RESPONSIBILITY OF THE CONTRACTOR FOR A PERIOD OF THIRTY DAYS AFTER ACCEPTANCE OF WORK.
3. IRRIGATION DESIGN IS DIAGRAMMATIC. MAINLINE, VALVES, LATERALS AND OTHER IRRIGATION EQUIPMENT MAY BE SHOWN OUTSIDE OF THE PLANTING BEDS FOR GRAPHIC CLARITY. ALL IRRIGATION EQUIPMENT SHALL BE LOCATED IN THE ADJACENT PLANTING BEDS.
4. IRRIGATION PIPE DEPTHS: MAINLINES UNDER PAVING SHALL HAVE 24" COVER OVER THE PIPES. LATERAL LINES UNDER PAVING SHALL HAVE 24" COVER OVER PIPES AND 12" COVER IN PLANTING BED AREAS.
5. CONTROL WIRES SHALL BE 14 GAUGE DIRECT BURIAL WIRE. USE RED FOR CONTROL WIRE AND WHITE FOR COMMON WIRE. CONTRACTOR SHALL RUN ONE SPARE COMMON AND ONE SPARE CONTROL WIRE TO EACH OF THE END VALVES. ALL LOW VOLTAGE WIRE SHALL BE MADE ONLY AT REMOTE CONTROL BOXES. ALL CONNECTIONS SHALL BE MADE WITH A 2' COIL WIRE FOR SERVICE. CONNECTION SHALL BE MADE WITH RAINBIRD "SNAP-TITE" CONNECTORS OR EQUAL.
6. ALL ELECTRICAL CONNECTIONS FOR THE CONTROLLER SHALL BE INSTALLED BY A LICENSED ELECTRICAL CONTRACTOR. ALL WORK SHALL COMPLY WITH THE MOST CURRENT STANDARDS AND CODES AT THE TIME OF INSTALLATION. CONTRACTOR SHALL HARD WIRE NEW CLOCKS AT CLOSEST, SAFEST LOCATION.

DISCLAIMER

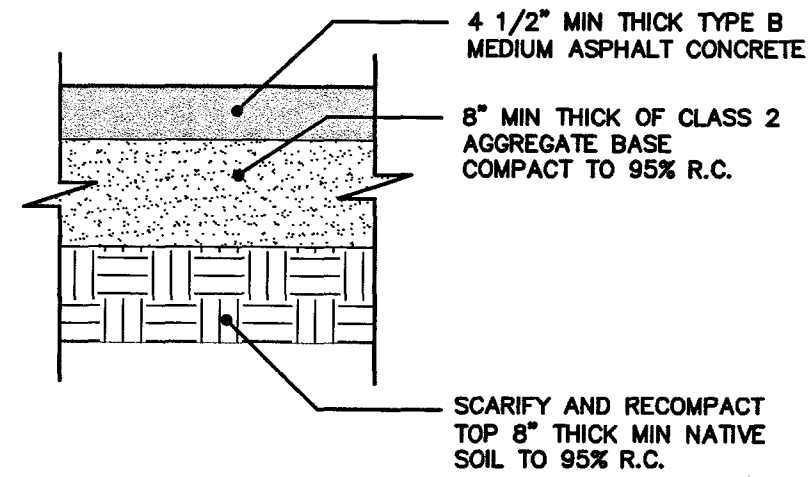
THE DATA SET FORTH ON THIS SHEET IS THE PROPERTY OF BOWMAN & WILLIAMS CONSULTING CIVIL ENGINEERS. IT IS AN INSTRUMENT OF SERVICE AND MAY NOT BE REPRODUCED, ALTERED, OR USED WITHOUT THE CONSENT OF THE ENGINEER. THE PROPER ELECTRONIC TRANSFER OF DATA SHALL BE THE USER'S RESPONSIBILITY WITHOUT LIABILITY TO THE ENGINEER. UNAUTHORIZED USE IS PROHIBITED.

APN 035-211-01, 02, 03 & 04

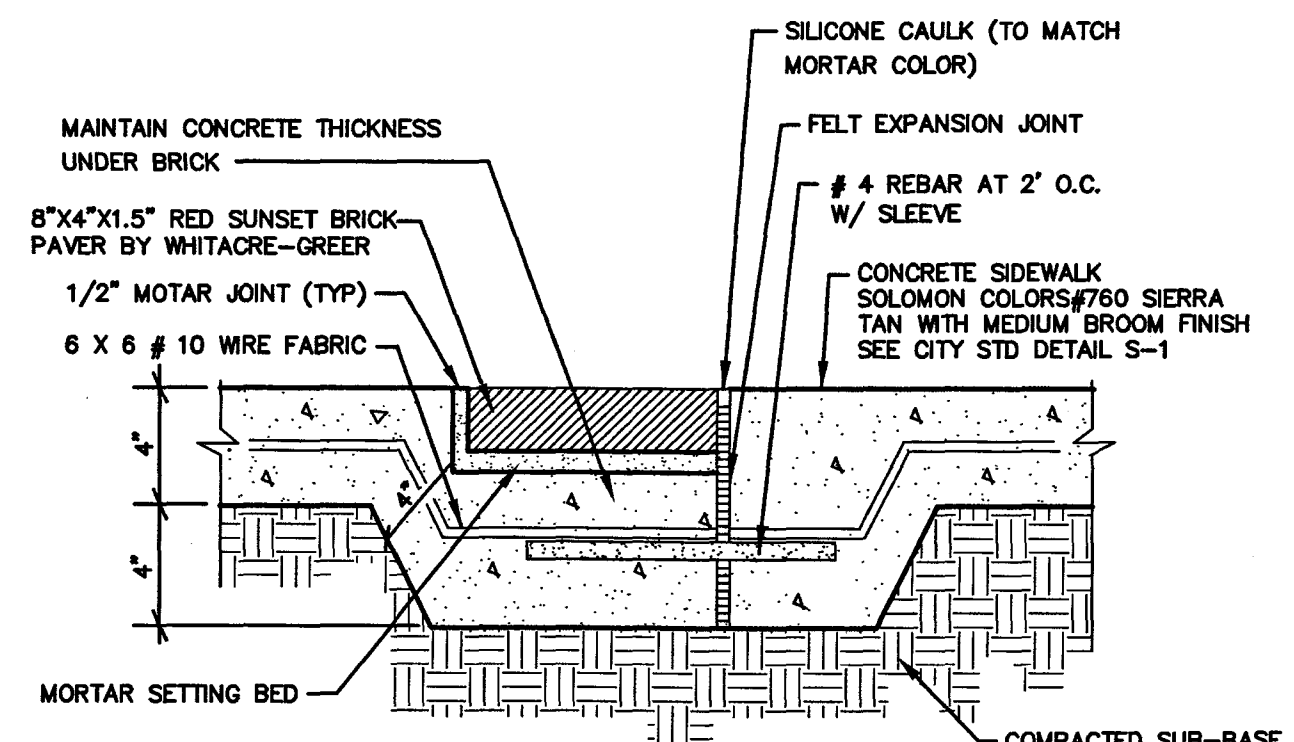
BOWMAN & WILLIAMS CONSULTING CIVIL ENGINEERS 1011 CEDAR STREET SANTA CRUZ, CA 95060 (831) 426-3560		DETAILS & SPECIFICATIONS IMPROVEMENT PLANS STOCKTON AVENUE & ESPLANADE INTERSECTION THE CITY OF CAPITOLA, CALIFORNIA	
SCALE 1" = 10'	DRAWN JFR	JOB NO. 23741-2	SHEET
DATE JANUARY 14, 2015	CHECKED	INDEX RODEO 3A	C4.1
DESIGN JFR	DWG NAME 25422-2_C4	FILE NO. 25422-2	OF 9



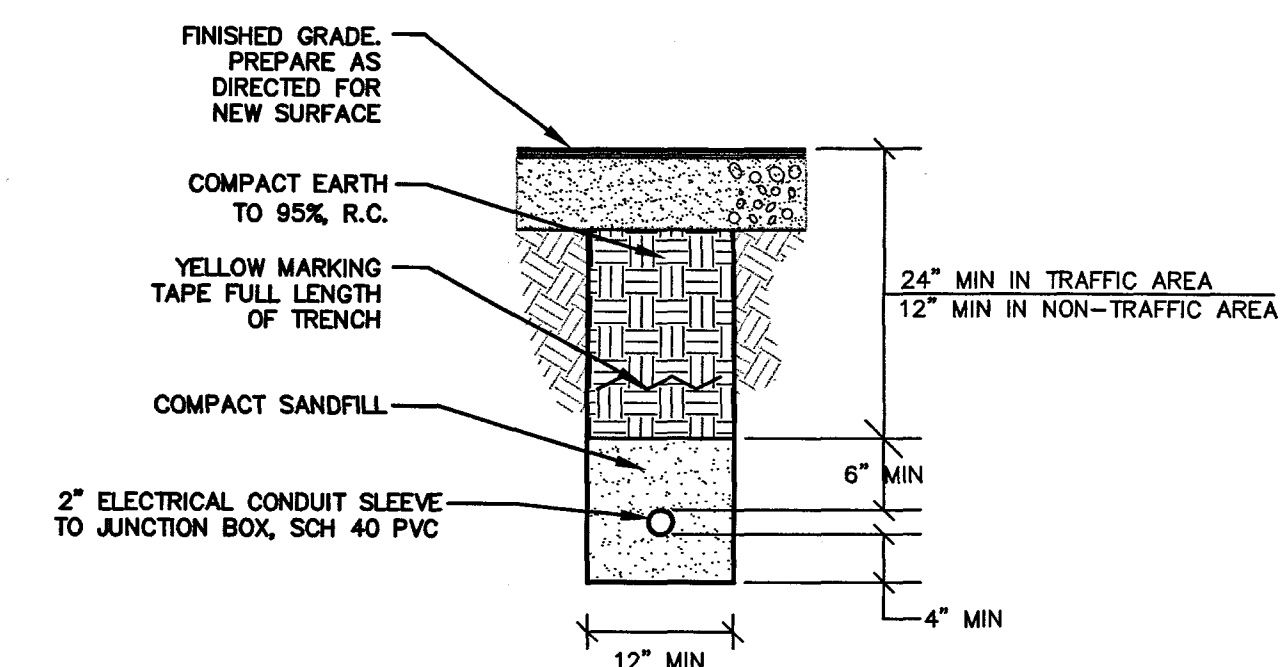
1 PAVEMENT BEVEL GRIND DETAIL
SCALE: NTS



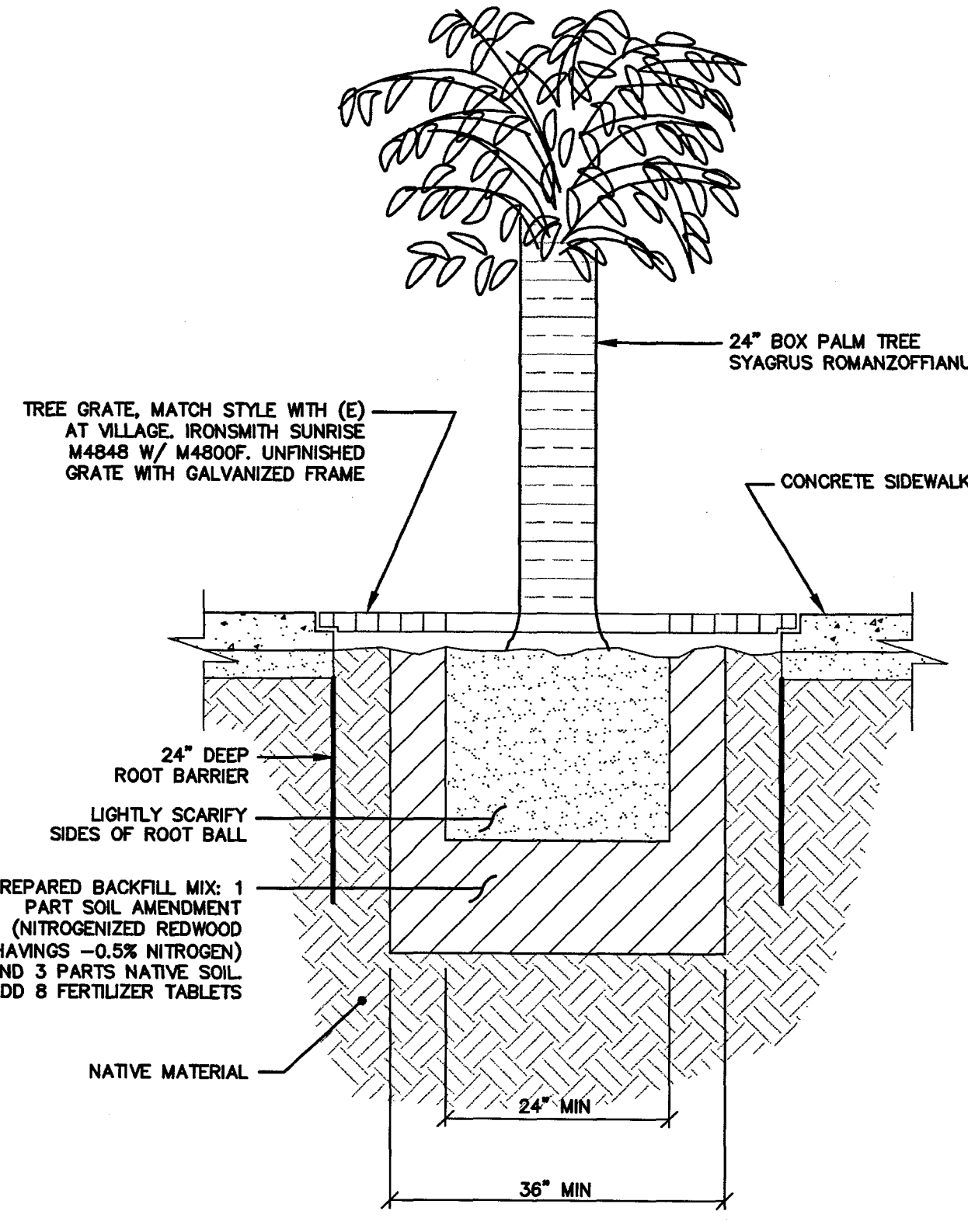
2 TYPICAL ASPHALT PAVEMENT SECTION
SCALE: 3/4"=1'-0"



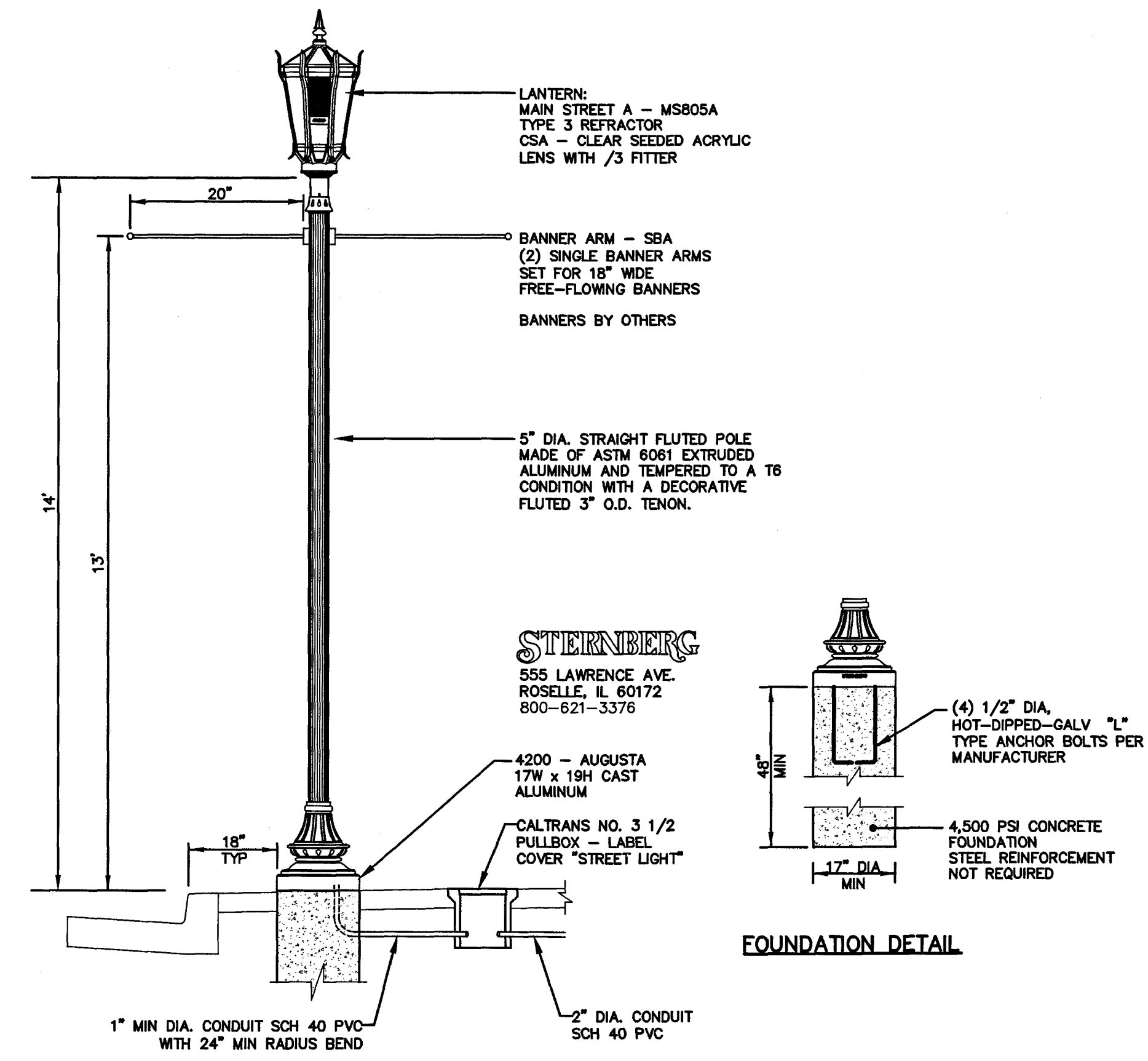
3 BRICK BAND TYPICAL SECTION
SCALE: NTS



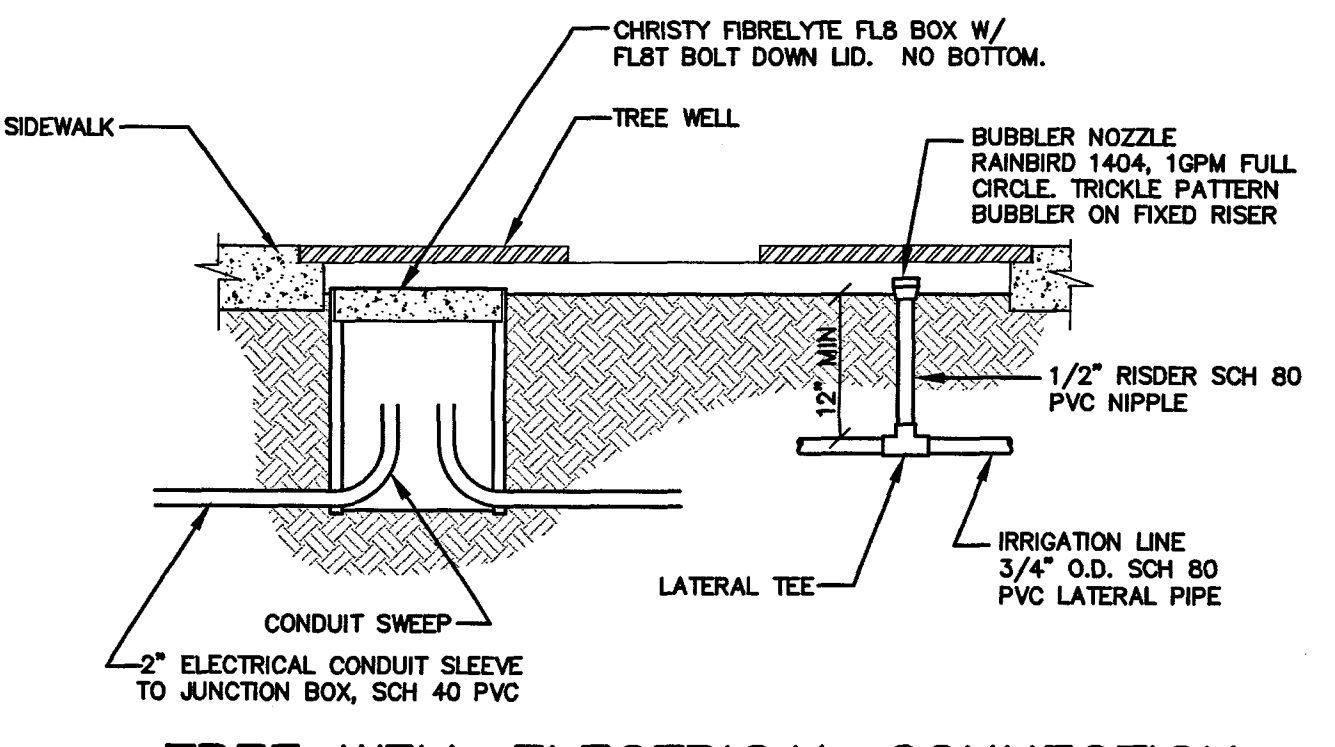
4 CONDUIT TRENCH DETAIL - LIGHTING
SCALE: NTS



6 TREE PLANTING DETAIL
SCALE: 3/4"=1'-0"



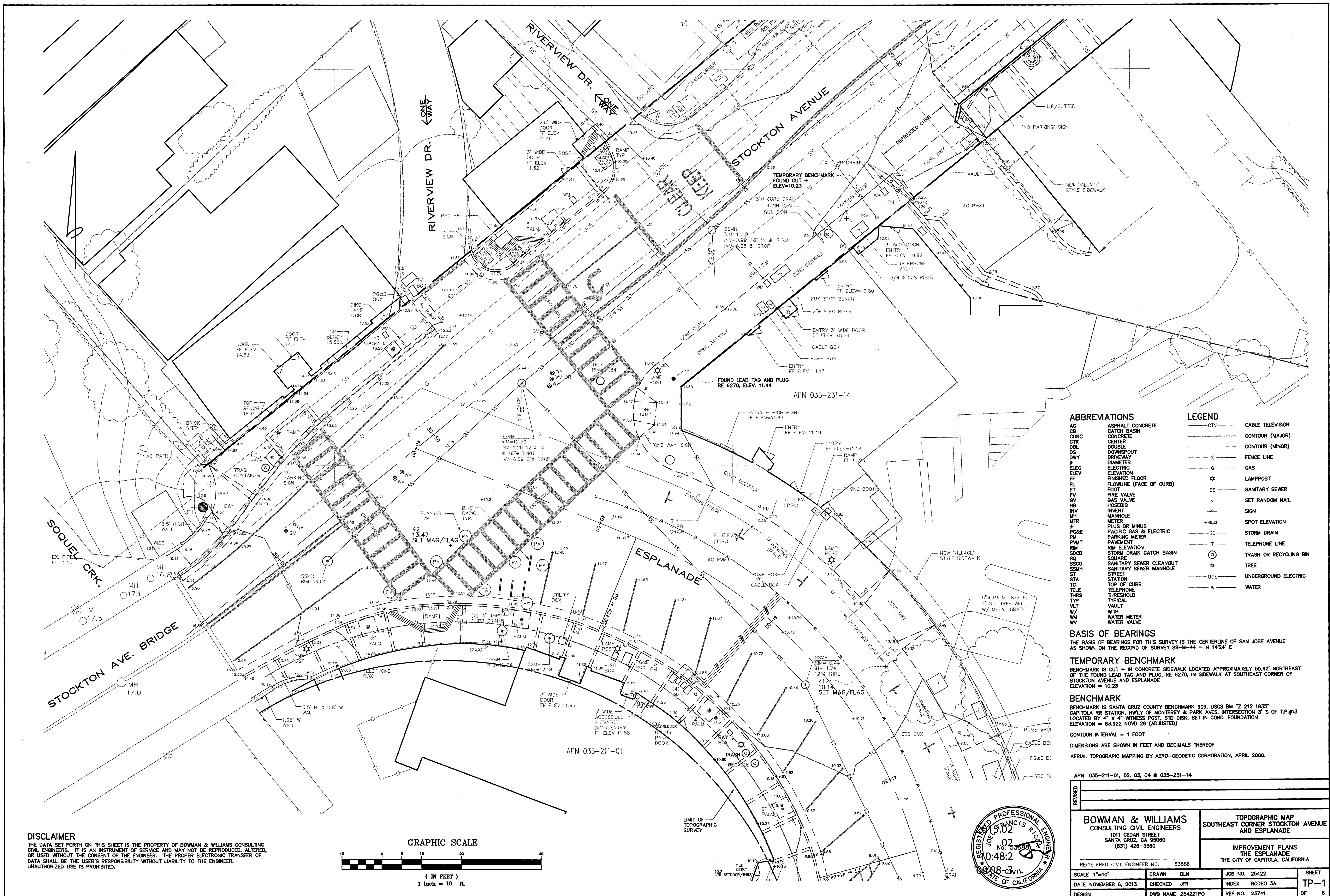
7 DECORATIVE STREET LIGHT DETAIL
SCALE: NTS



5 TREE WELL ELECTRICAL CONNECTION & BUBBLER RISER AT TREETWELL
SCALE: 1" = 1' 0"



J:\B&W\25400\25422 City of Capitola Esplanade\dwg\Stockton-Esplanade\25422-2_C4REV1.dwg, 1/14/2015 9:06:54 AM, MIP.pc3



ABBREVIATIONS		LEGEND	
AC	ASPHALT CONCRETE	CTV	CABLE TELEVISION
CB	CATCH BASIN	---	CONTOUR (MAJOR)
CONC	CONCRETE	---	CONTOUR (MINOR)
CTR	CENTER	X	FENCE LINE
DBL	DOUBLE	G	GAS
DS	DOWNSPOUT	☆	LAMPPOST
DWY	DRIVEWAY	SS	SANITARY SEWER
DIAM	DIAMETER	o	SET RANDOM NAIL
ELEC	ELECTRIC	-	SIGN
ELEV	ELEVATION	+46.21	SPOT ELEVATION
FF	FINISHED FLOOR	SD	STORM DRAIN
FL	FLOWLINE (FACE OF CURB)	T	TELEPHONE LINE
FT	FOOT	⊙	TRASH OR RECYCLING BIN
FV	FIRE VALVE	●	TREE
GV	GAS VALVE	UG	UNDERGROUND ELECTRIC
HOSE	HOSEBIB	W	WATER
INV	INVERT		
MH	MANHOLE		
MTR	METER		
±	PLUS OR MINUS		
PG&E	PACIFIC GAS & ELECTRIC		
PM	PARKING METER		
PVMT	PAVEMENT		
RIM	RIM ELEVATION		
SQCB	STORM DRAIN CATCH BASIN		
SQ	SQUARE		
SSCO	SANITARY SEWER CLEANOUT		
SSMH	SANITARY SEWER MANHOLE		
ST	STREET		
STA	STATION		
TC	TOP OF CURB		
TELE	TELEPHONE		
THRS	THRESHOLD		
TYP	TYPICAL		
VLT	VAULT		
W/W	WITH WATER METER		
WV	WATER VALVE		

BASIS OF BEARINGS
 THE BASIS OF BEARINGS FOR THIS SURVEY IS THE CENTERLINE OF SAN JOSE AVENUE AS SHOWN ON THE RECORD OF SURVEY 88-M-44 = N 14°24' E

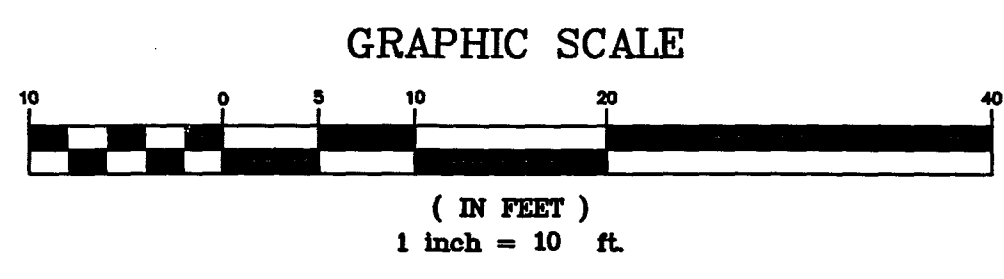
TEMPORARY BENCHMARK
 BENCHMARK IS CUT + IN CONCRETE SIDEWALK LOCATED APPROXIMATELY 58.42' NORTHEAST OF THE FOUND LEAD TAG AND PLUG, RE 6270, IN SIDEWALK AT SOUTHEAST CORNER OF STOCKTON AVENUE AND ESPLANADE
 ELEVATION = 10.23

BENCHMARK
 BENCHMARK IS SANTA CRUZ COUNTY BENCHMARK 909, USGS BM "Z 212 1935" CAPITOLA RR STATION, NWLY OF MONTEREY & PARK AVES. INTERSECTION 3' S OF T.P.#13 LOCATED BY 4" X 4" WITNESS POST, STD DISK, SET IN CONC. FOUNDATION
 ELEVATION = 63.922 NGVD 29 (ADJUSTED)

CONTOUR INTERVAL = 1 FOOT
 DIMENSIONS ARE SHOWN IN FEET AND DECIMALS THEREOF
 AERIAL TOPOGRAPHIC MAPPING BY AERO-GEODETTIC CORPORATION, APRIL 2000.

APN 035-211-01, 02, 03, 04 & 035-231-14

DISCLAIMER
 THE DATA SET FORTH ON THIS SHEET IS THE PROPERTY OF BOWMAN & WILLIAMS CONSULTING CIVIL ENGINEERS. IT IS AN INSTRUMENT OF SERVICE AND MAY NOT BE REPRODUCED, ALTERED, OR USED WITHOUT THE CONSENT OF THE ENGINEER. THE PROPER ELECTRONIC TRANSFER OF DATA SHALL BE THE USER'S RESPONSIBILITY WITHOUT LIABILITY TO THE ENGINEER. UNAUTHORIZED USE IS PROHIBITED.



BOWMAN & WILLIAMS CONSULTING CIVIL ENGINEERS 1011 CEDAR STREET SANTA CRUZ, CA 95060 (831) 426-3560		TOPOGRAPHIC MAP SOUTHEAST CORNER STOCKTON AVENUE AND ESPLANADE	
REGISTERED CIVIL ENGINEER NO. 53588		IMPROVEMENT PLANS THE ESPLANADE THE CITY OF CAPITOLA, CALIFORNIA	
SCALE 1"=10'	DRAWN DLN	JOB NO. 25422	SHEET
DATE NOVEMBER 6, 2013	CHECKED JFR	INDEX RODEO 3A	TP-1
DESIGN	DWG NAME 25422TPO	REF NO. 23741	OF 6