



# Rispin Mansion Park

---

Public Workshop  
December 2, 2020



Michael Arnone + Associates  
LANDSCAPE ARCHITECTURE

# Workshop Agenda

- Recap last workshop
- Review responses

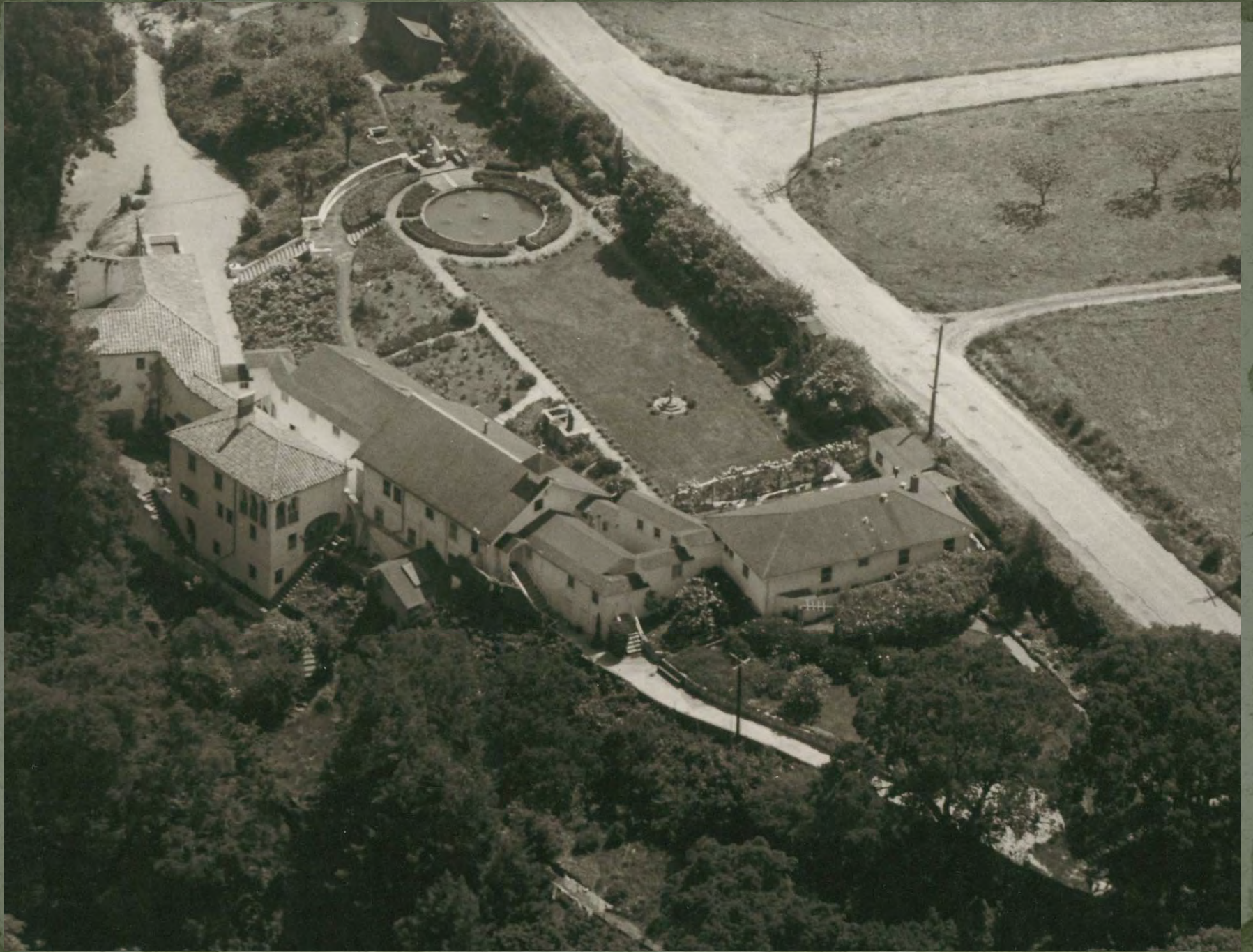
This workshop is focused on fine tuning the proposed design of the park for grant application.

Staff will be presenting this design with the comments received to the City Council in January or February of 2021

We will not be taking input on the name of the park tonight, that will be discussed at later time by the City Council

# Participation Guidelines

- Please remain on mute unless you are commenting
- Written questions can be sent to [kmozumder@ci.capitola.ca.us](mailto:kmozumder@ci.capitola.ca.us) during or after the meeting
- Please use the “Raise Hand” option if you wish to speak. We will call on you when it is your turn.

















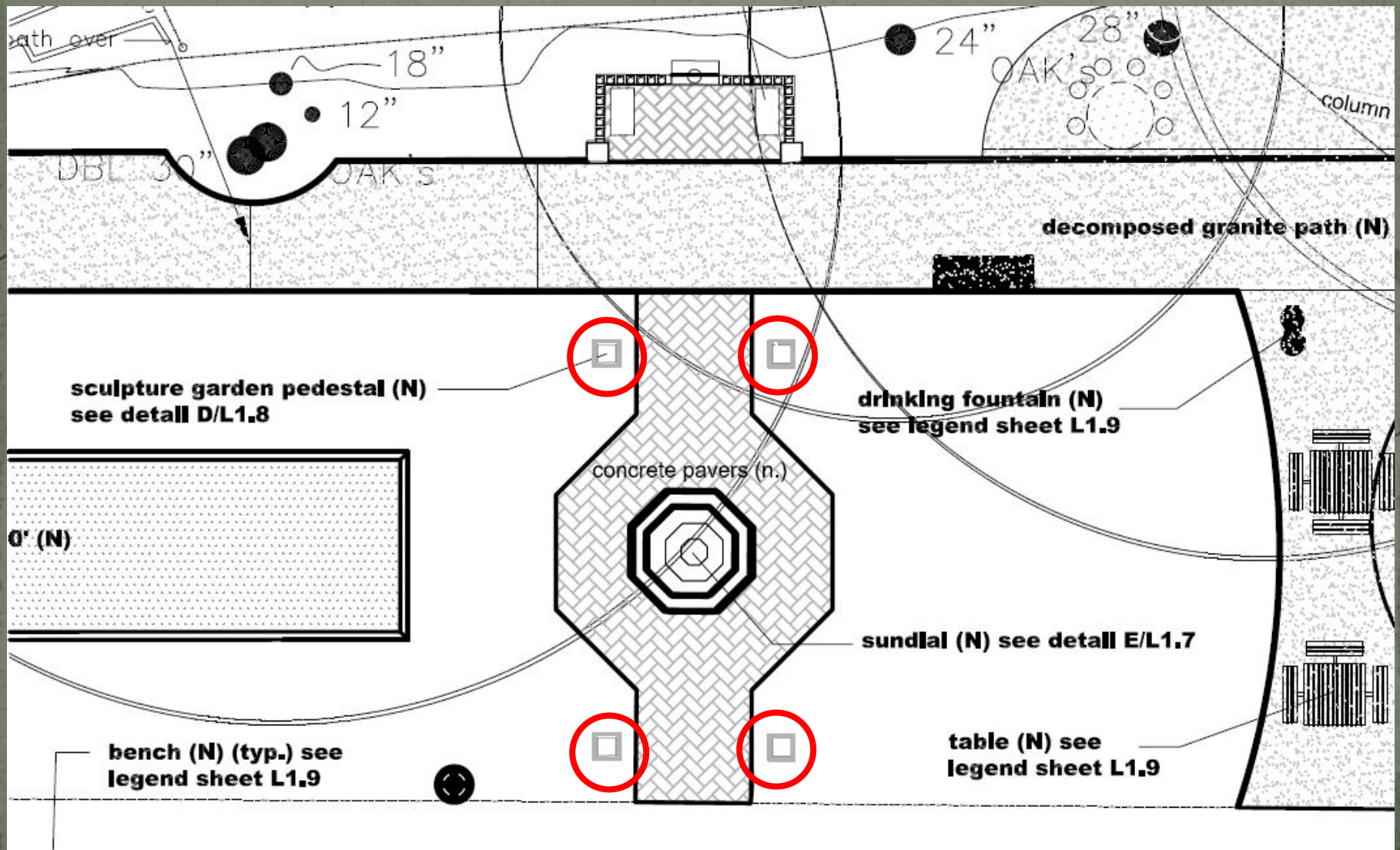
Artifacts in  
the garage

Some will be  
used in the  
nature play area



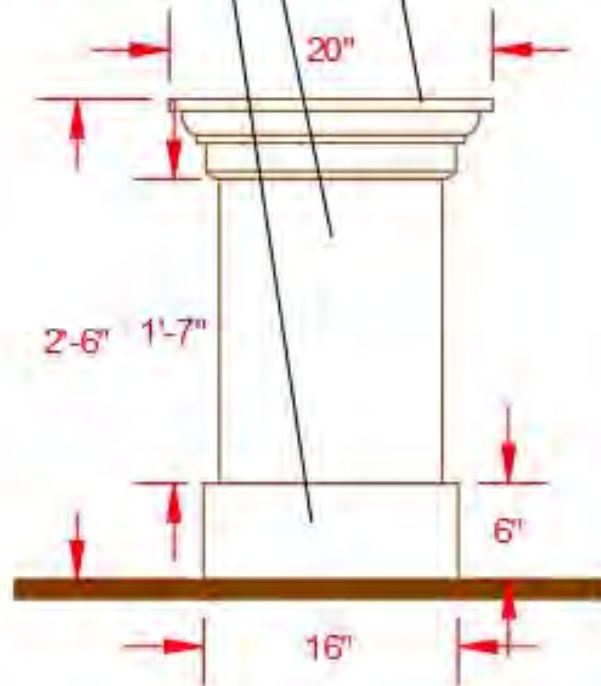
1. Public art displays – is it worth designating a few locations for rotating public art? Would that be consistent with the overall park design.
2. Reflecting pool ideas
3. Mosaics on the stairs
4. Support for wall design – more visibility into the park is better
5. Interpretive panels
6. Lighting on Soquel Creek bridge – pathway lighting that would not cast light onto the creek?
7. Murals – in mansion windows and on St. Clare basement walls
8. Fundraising / Brick Sales / benches/ light poles
9. Roses on Arbor – can we use the historic roses?
10. Violets – is there a location in the planting plan that some violets could be incorporated?
11. Grant Schedule

# Public art pedestals



concrete pedestal cap  
see cap detail sheet L1.7  
concrete pedestal - paint  
to match mansion exterior  
concrete pedestal base

Note: finish and color  
of new pedestals to  
be natural gray sand  
finish concrete



D  
1.8

sculpture pedestal elevation

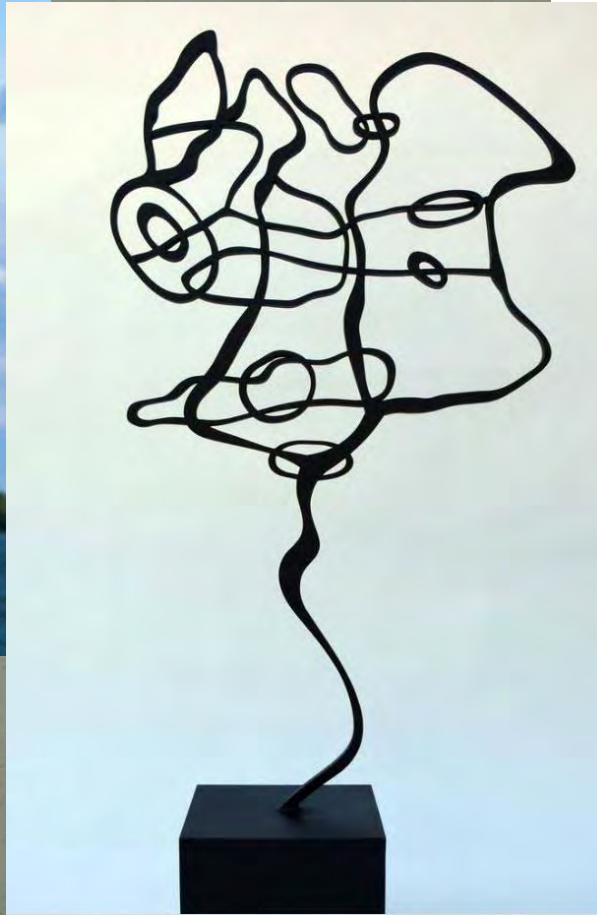
scale: 1" = 1' - 0"

# Reflecting pool ideas

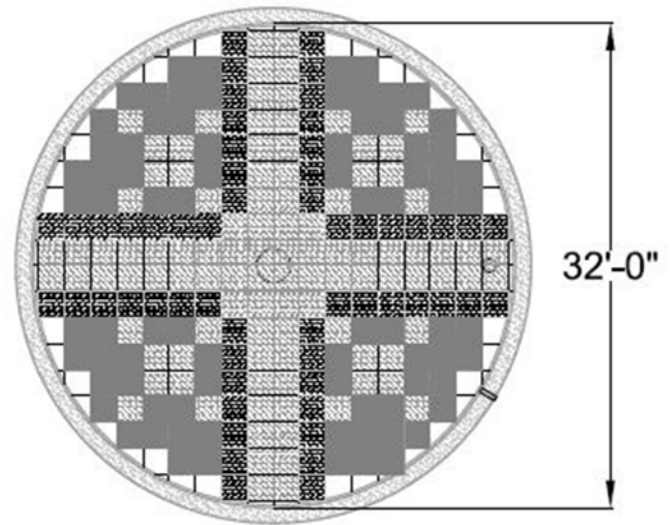
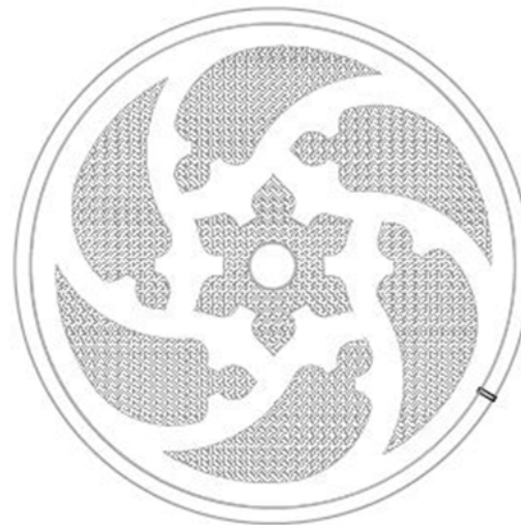
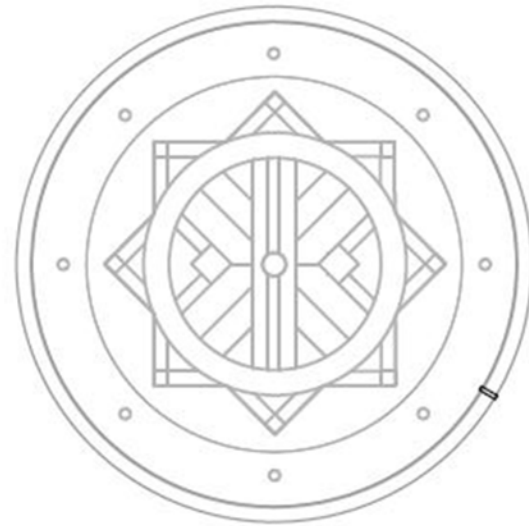
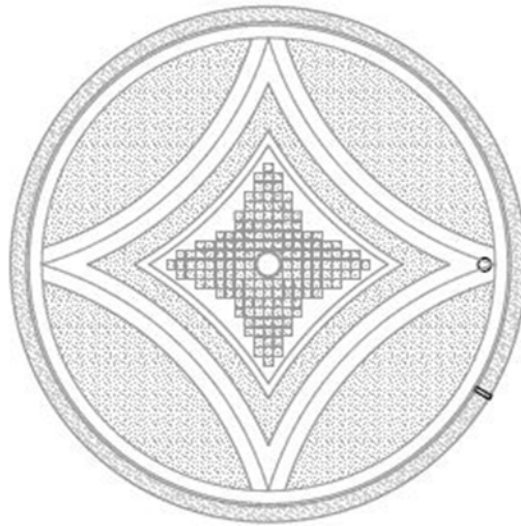




Contemporary sculpture  
to be reviewed by Arts  
Commission



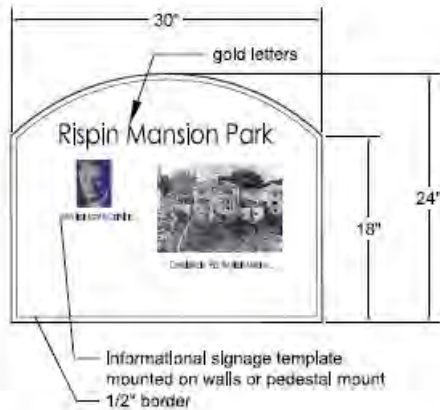
Art deco tile  
to be reviewed  
by Arts  
Commission





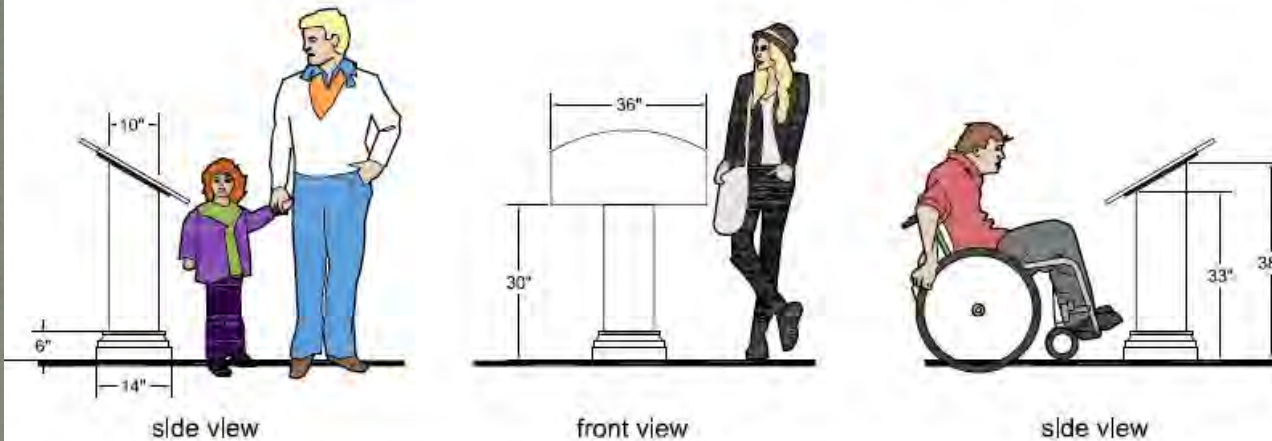


Wharf Road  
wall design



#### INFORMATIONAL SIGNS

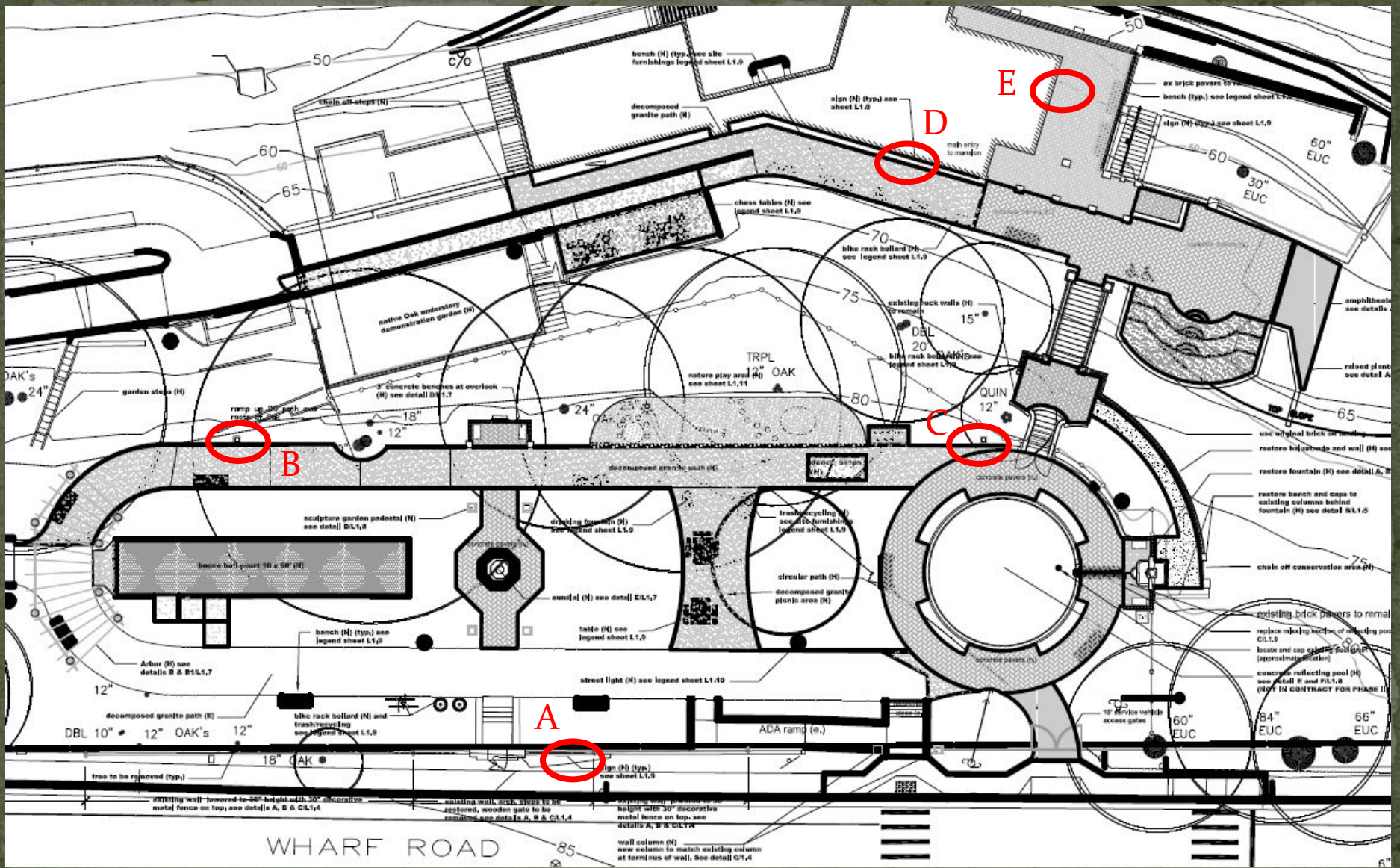
1. The Rispin Informational Park Signage shall be fabricated using Porcelain Enamels.
2. The size and shape of the template is shown to the left.
3. The graphic design, selection of photos, images and text shall be approved by the City and Landscape Architect prior to fabrication.
4. The Informational themes for each sign are noted below.
5. Three of the signs will be wall mounted and two will be pedestal mounted as noted below.
6. The sign locations are noted below and shown on Sheets L1.1, L1.2 and L1.3



#### SIGN CONCEPT

sign	location	theme	mounting
A	Wharf Road wall by entry	Park name, dates of construction and dedication	on wall
B	north pathway by overlook	Nuns of St. Clare period photos/narrative	on pedestal
C	south pathway by staircase	Butterfly Habitat and Oak Woodland Restoration	on pedestal
D	west mansion wall near entry	Henry Rispin bio./photos/narrative	on wall
E	south mansion wall	Mansion Interior floorplan/photos/narrative	on wall

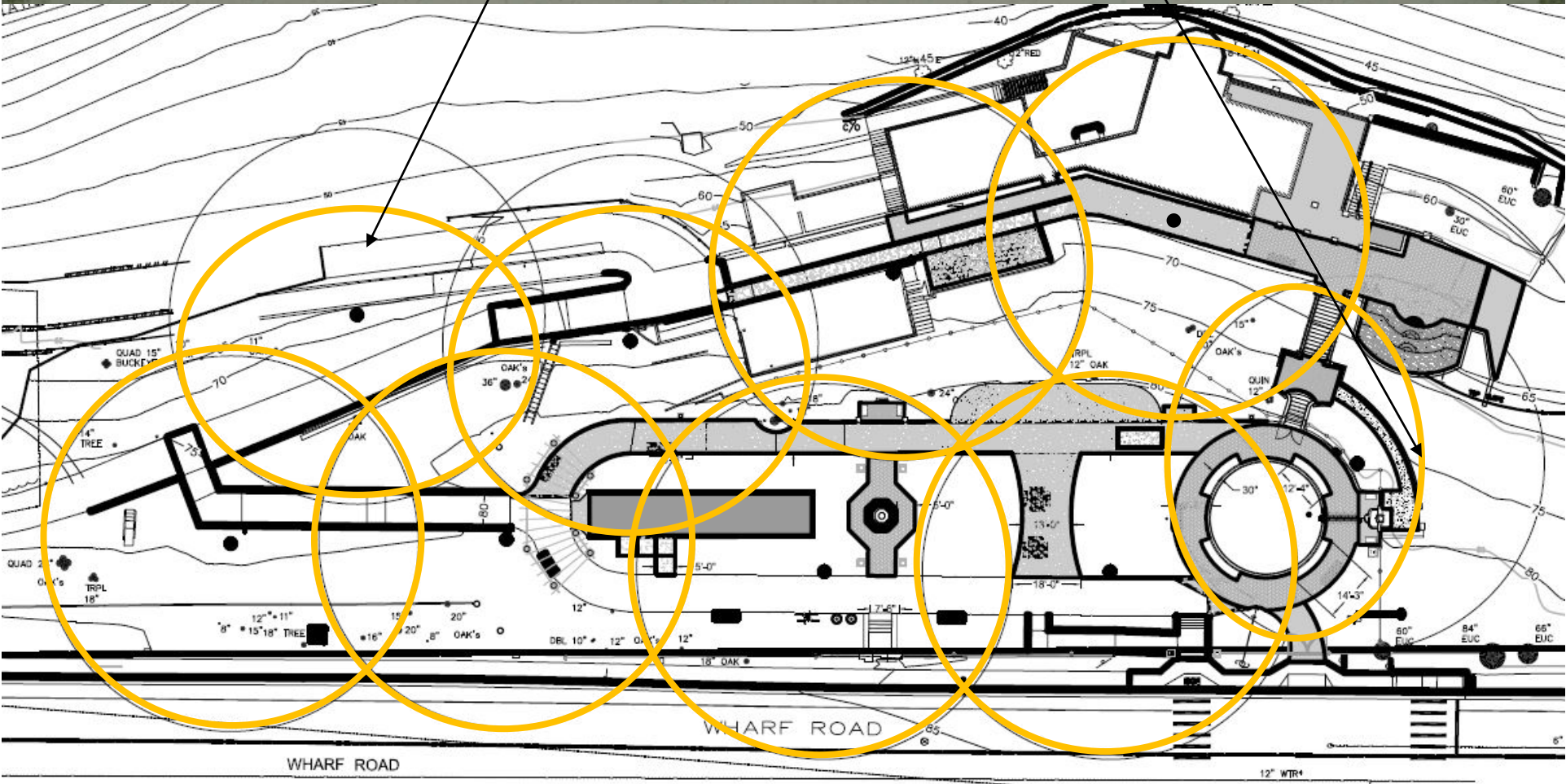
Adapt size of informational placard as needed



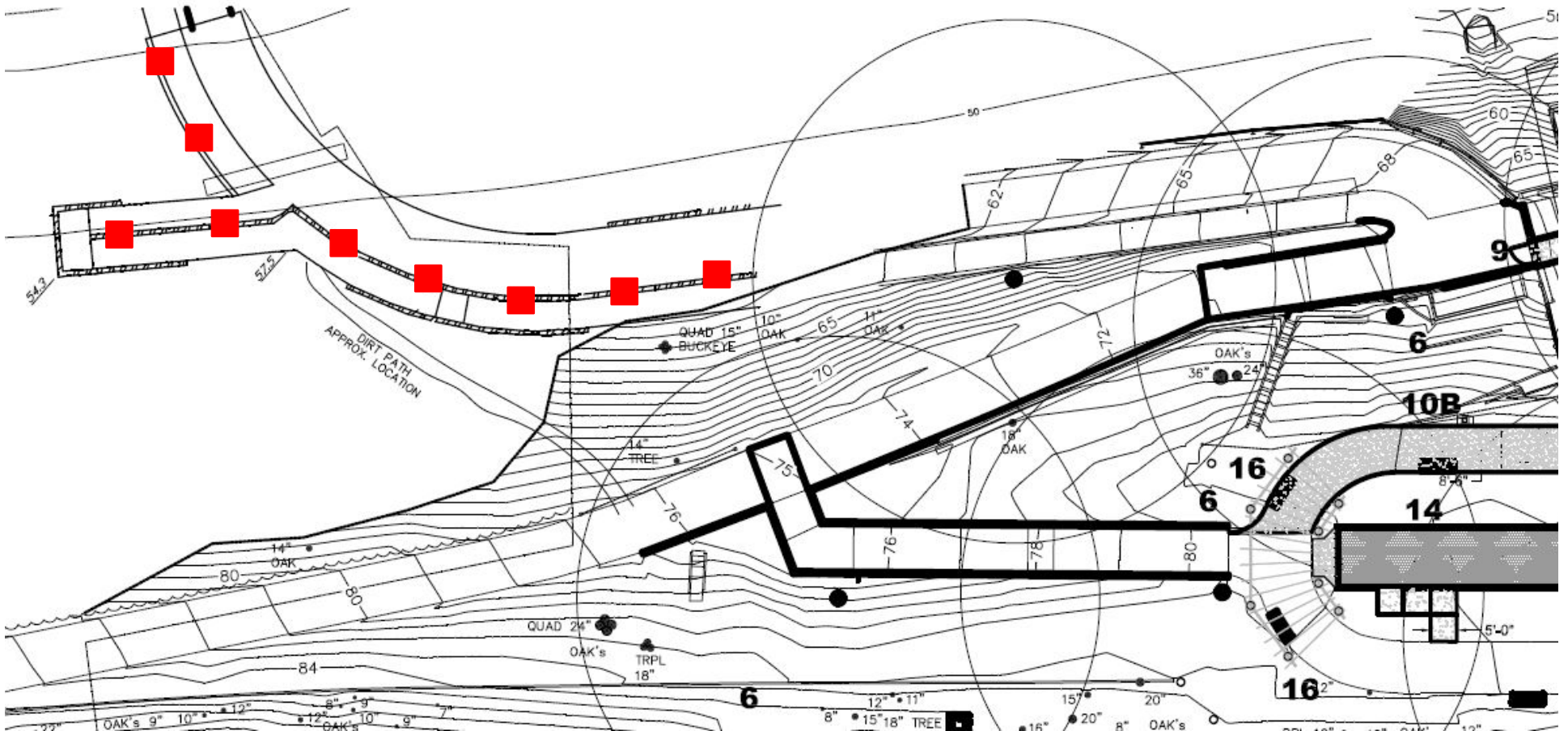
- A Name of park, date of original construction, date of dedication
- B Nuns of St. Clare period photo and narrative
- C Butterfly Habitat and Oak Woodland restoration
- D Henry Rispin bio, photos and narrative
- E Mansion interior floorplan, photos and narrative

# Add lighting along trail

Qhz #tj kw#bgghg#z lk#vk.hg#wr#p tq#p l#h#tj kw#  
 rq#ulsdubdq#duhd#bqg#P rqdufk#kde lwdw



# Add lighting along trail

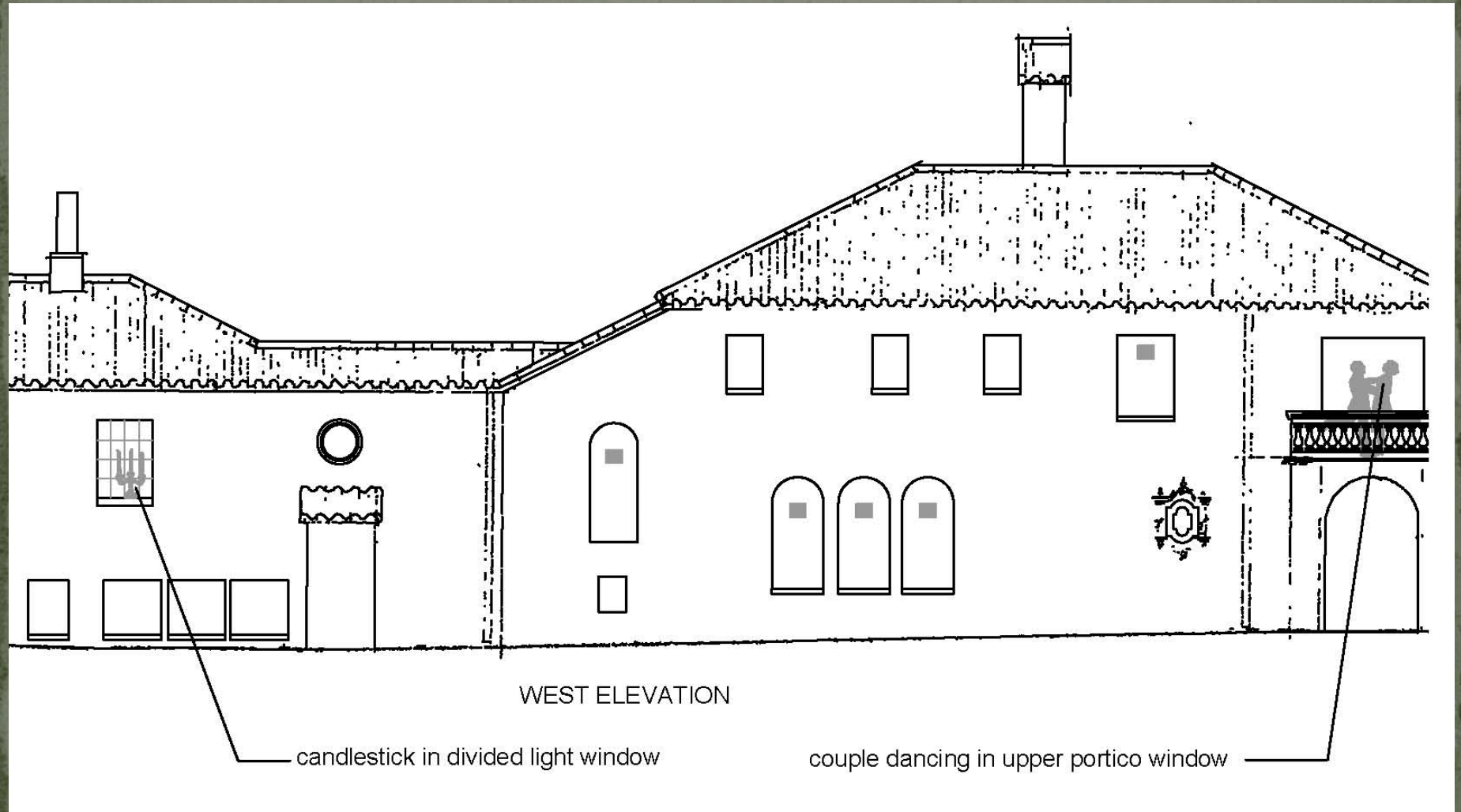


■ Xvh#b] kw#il{wxuh#p rxqwhg#r#q#j xdujudlb  
Vsdhf#dls sur {lp dwhd} # 3 7#r#q#fhqwhu

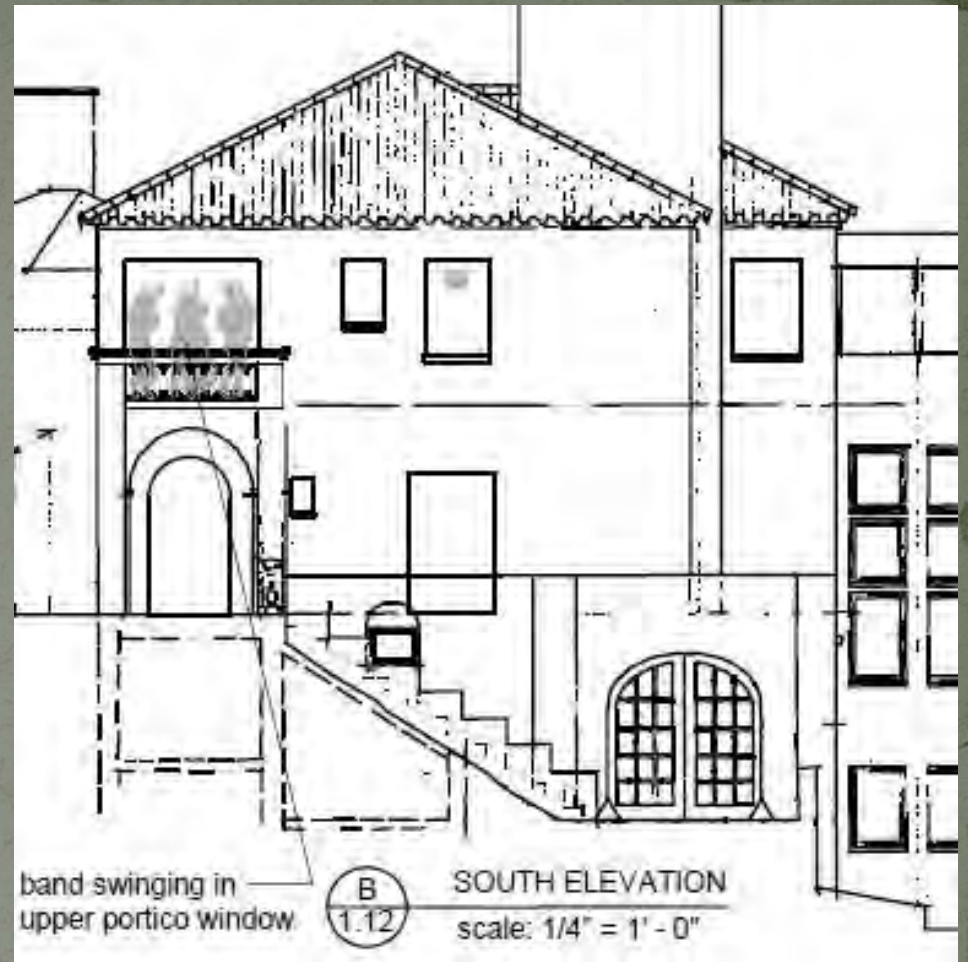
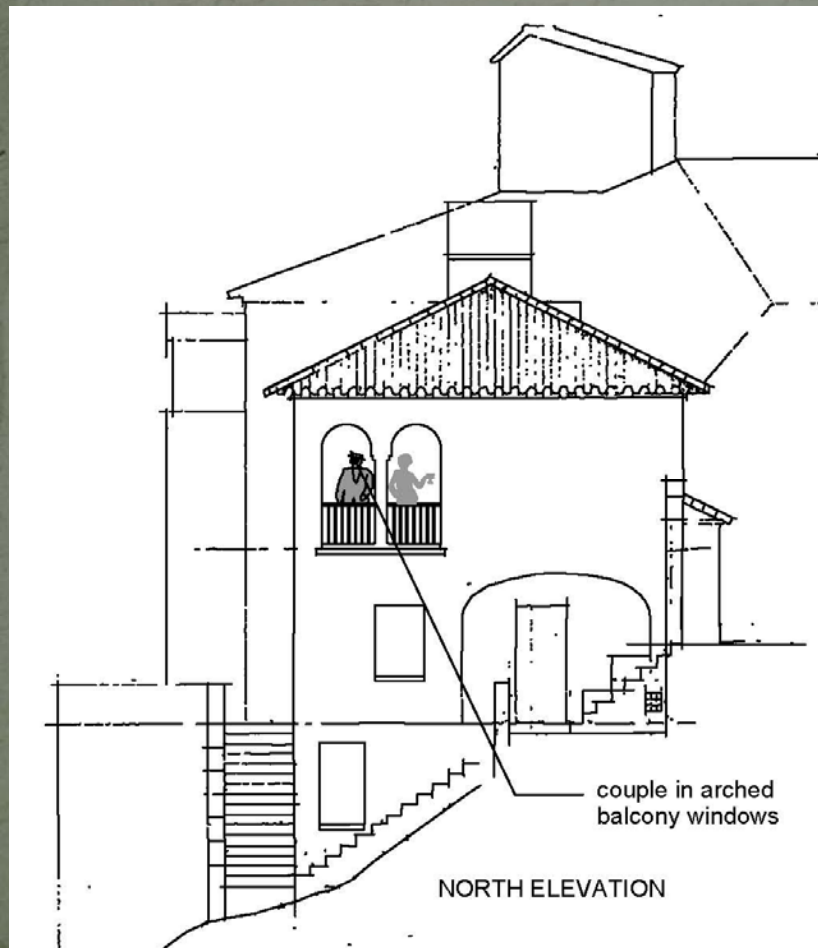
# Mounted light options



# Murals in mansion windows



# Murals in mansion windows

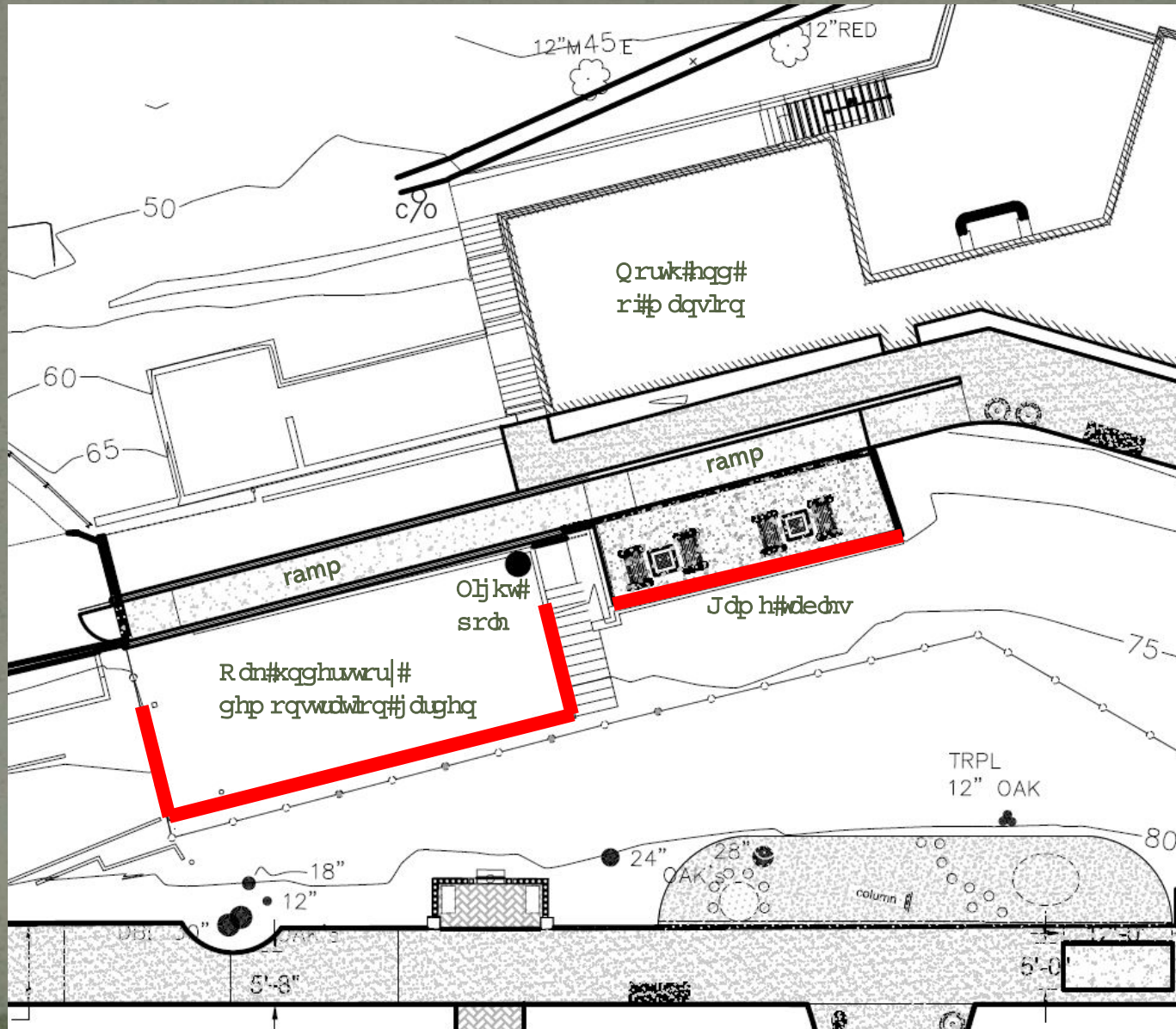




Mural concepts to be reviewed by Arts Commission



# Location of walls for murals



# Mural on St. Clare basement wall



# Mural concepts to be reviewed by Arts Commission



Judiilw#z dæ#q#p dqv!rq#j dudj h



Mural concepts to be reviewed by Arts Commission





Mural concepts to be reviewed by Arts Commission





Mural concepts to be reviewed by Arts Commission






Mural concepts to be reviewed by Arts Commission

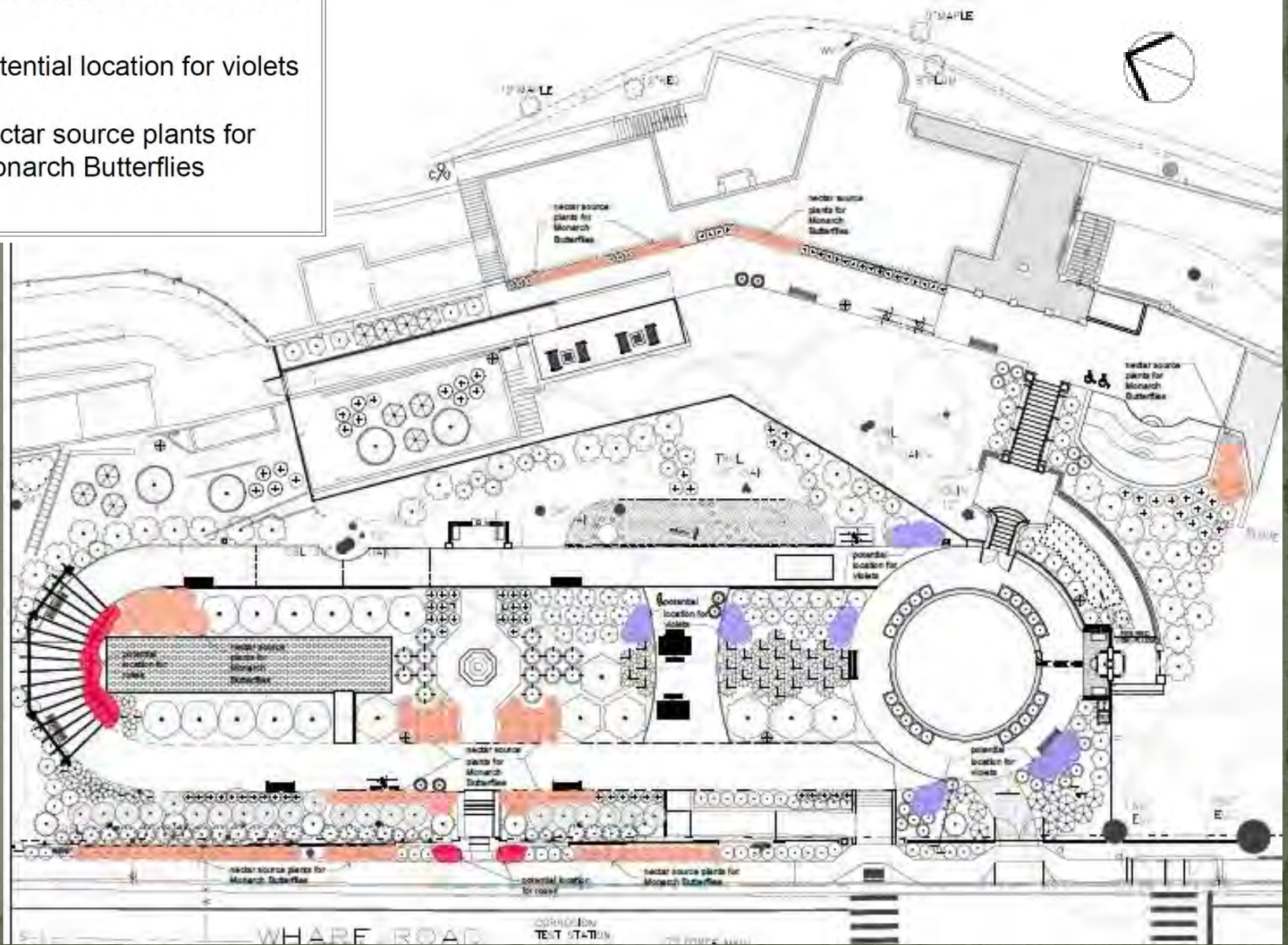




# Add heritage roses and violets

## KEY

-  potential location for roses
-  potential location for violets
-  nectar source plants for Monarch Butterflies



Thank you for your interest and support in re-creating an historic park. It has taken years of effort by many individuals and community groups to get us this close. Hope to see you at the park in 2021



# Participation Guidelines

- Please remain on mute unless you are commenting
- Written questions can be sent to [kmozumder@ci.capitola.ca.us](mailto:kmozumder@ci.capitola.ca.us) during or after the meeting
- Please use the “Raise Hand” option if you wish to speak. We will call on you when it is your turn.

THE END